

Universal Gear Drive Systems

Contents

Introduction.....	3
LR-100 Right Angle Geardrive	
LR-200 Right Angle Geardrive	
LR-400 Right Angle Geardrive	
LR-500 Right Angle Geardrive	
LR-600 Right Angle Geardrive	
HR-200 Right Angle Geardrive	
HR-400 Right Angle Geardrive	
HR-500 Right Angle Geardrive	
HR-600 Right Angle Geardrive	
Warranty.....	4



Introduction

Housings: Ductile Iron standard on all units except LR-100 and LR-200, which are Gray Iron.

Gearing: Straight Bevel and Spiral Bevel Machine Cut Alloy Steel gears with Titanium

Shafting: Through hardened, alloy steel shafting in LR-400 and smaller units and Carburized alloy steel shafting in LR-500 and LR-600.

Bearing Caps: Gray Iron for smaller units and Ductile Iron for larger units.

Bearings: ISO through hardened and ground type bearings standard, Timken® or other alternative bearings available upon request.

Seals: Nitrile double lip oil seals standard, Viton seals available upon request.

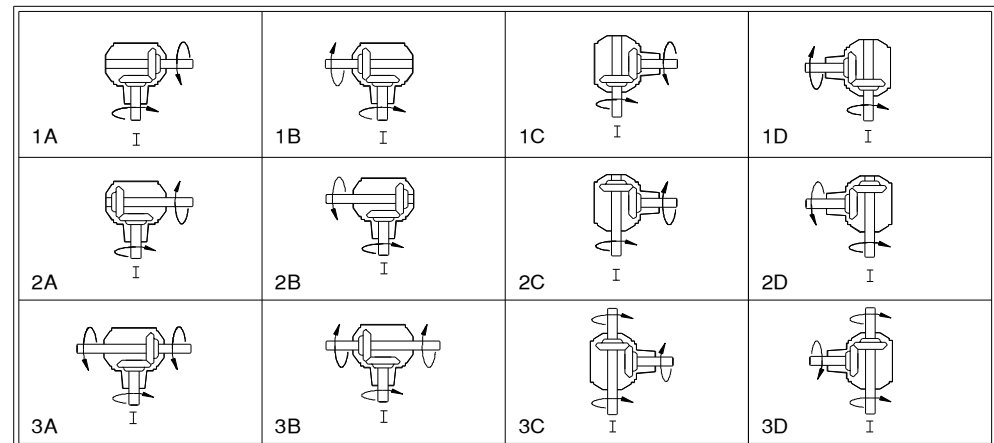
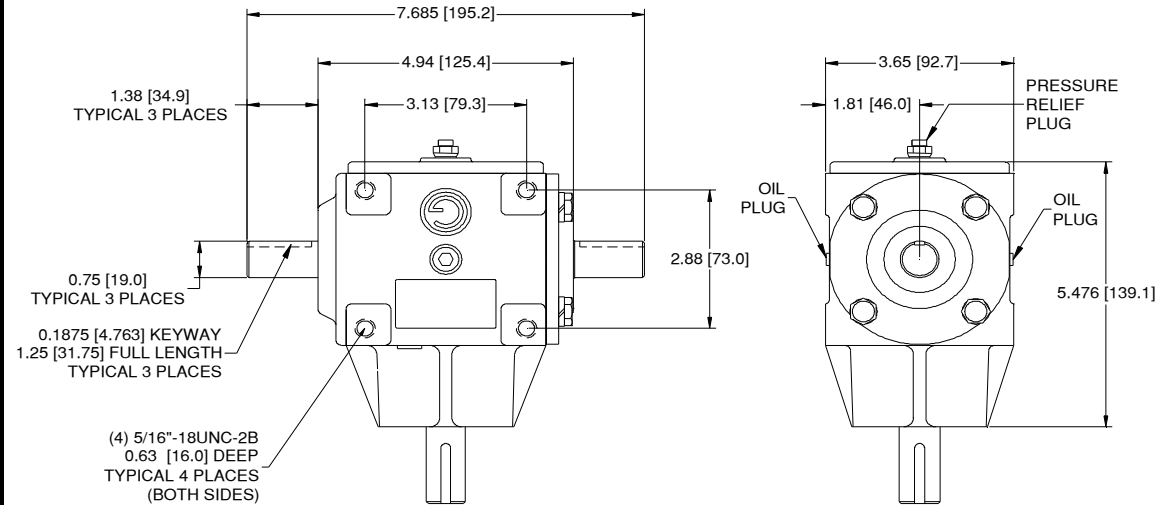
LR-100 Universal Right Angle Geardrive

Approximate Weight: 10 lbs. [4.5 kg]

Approximate oil capacity: 7 oz. [0.2 liters]

LR-100 Universal Gear Drives Standard Feature Catalog Code Designations			
FEATURE	DESCRIPTION	CODE	
CONFIGURATION			Sample L11A
	Reference Configuration Chart	1A	
RATIO			
GEAR RATIO	1.5:1	06	Sample L11A10
	1.1:1	09	
	1:1	10	
	1:1.1	11	
	1:1.5	15	
SHAFTS			Sample L11A10K1
SHAFT	3/4" w/ 3/16" Key	K1	
<p>Standard Gearboxes have all shaft extensions the same. If multiple shaft extensions are required consult Omni Gear Engineering</p> <p>Standard Gearboxes are Straight Bevel Gears. If Spiral Bevel Gears are required, add "Code S" to the end of product code</p> <p>If Spiral Bevel Gears are required, the direction of rotation of the Input Shaft must be designated with "Code R" for Clockwise rotation or "Code L" for counter clockwise following the Code "S" for Spiral Bevel Gears</p>			<p>Sample L11A10K1S</p> <p>Sample L11A10K1SL</p>

All Dimensions in INCHES [mm]



Configuration Chart

LR-100 Universal Shaft Options/Ratings

Shaft Options

For custom shaft options, contact OMNI GEAR.

NOTE: The information shown in this catalog is for general purposes only. Not to be used for manufacture or design.

OMNI GEAR reserves the right to update or change its products; therefore, the information shown is subject to change.

If specific information is not present for your application or dimensional information. Please contact OMNI GEAR.

HP and Torque Ratings

Series LR-100	100 RPM		540 RPM		1000 RPM		2000 RPM		3000 RPM	
	Input HP	Output Torque	Input HP	Output Torque	Input HP	Output Torque	Input HP	Output Torque	Input HP	Output Torque
Ratio										
1.5:1	1.2	978	6.3	930	11	903	22	865	32	839
1.1:1	1.6	1070	8.4	1012	15	980	29	935	42*	905*
1:1	2.1	1290	10	1216	19	1176	36	1120	52*	1082*
1:1.1	1.7	1031	8.6	973	15	941	29	897	43*	867*
1:1.5	2.5	1244	13	1163	23	1120	43*	1061*	62*	1022*

* Exceeds maximum recommended pitch line velocity for Straight Bevel Gear

Note: The horsepower and torque ratings given are for reference purposes only. Due to various application conditions the horsepower and torque ratings shown may result in higher or lower capacities and in certain cases the max. input rpm may be exceeded. For these reasons, customer testing for specific applications is strongly recommended.

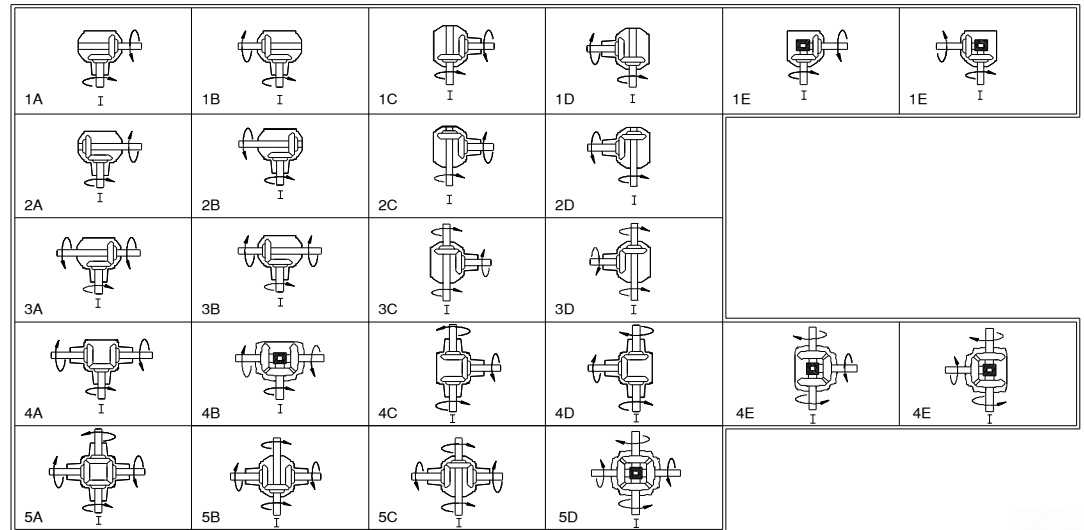
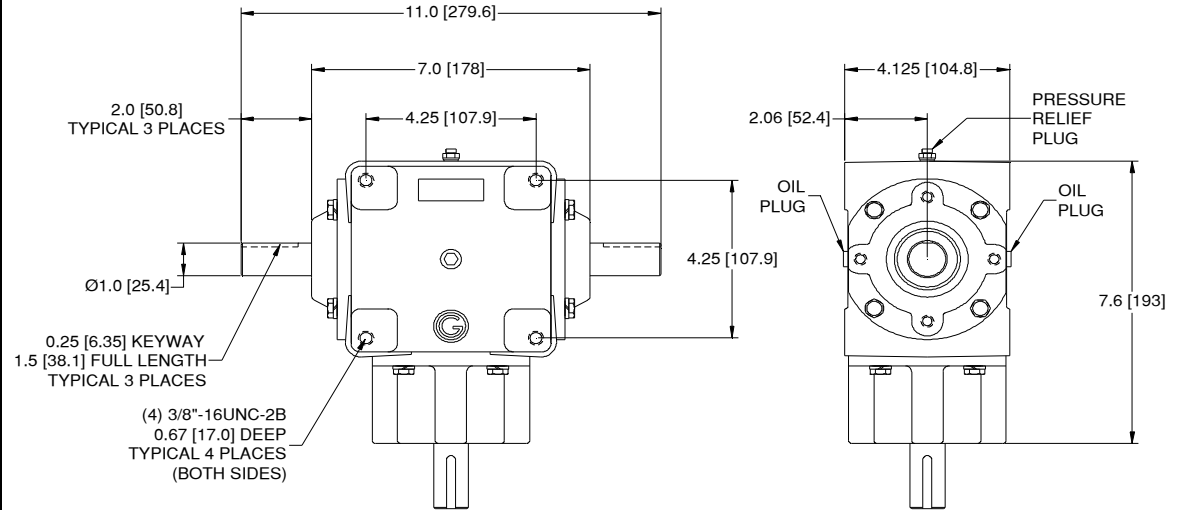


LR-200 Universal Right Angle Geardrive

Approximate Weight: 23 lbs. [10.4 kg]
 Approximate oil capacity: 16 oz. [0.48 liters]

LR-200 Universal Gear Drives Standard Feature Catalog Code Designations			
FEATURE	DESCRIPTION	CODE	
CONFIGURATION			Sample L21A
Unit	Reference Configuration Chart	1A	
RATIO			Sample L21A10
GEAR RATIO	2:1	05	
	1.5:1	06	
	1.35:1	07	
	1:1	10	
	1:1.35	13	
	1:1.5	15	
SHAFTS			Sample L21A10K2
SHAFT	1" w/ 1/4" Key	K2	
Standard Gearboxes have all shaft extensions the same. If multiple shaft extensions are required consult Omni Gear Engineering			
Standard Gearboxes are Straight Bevel Gears. If Spiral Bevel Gears are required, add "Code S" to the end of product code			
If Spiral Bevel Gears are required, the direction of rotation of the Input Shaft must be designated with "Code R" for Clockwise rotation or "Code L" for counter clockwise following the Code "S" for Spiral Bevel Gears			
Gearbox configuration 1E and 1F are not available in 1:2 or 2:1 ratio.			

All Dimensions in INCHES [mm]



Configuration Chart



LR-200 Universal Shaft Options/Ratings

Shaft Options

For custom shaft options, contact OMNI GEAR.

NOTE: The information shown in this catalog is for general purposes only. Not to be used for manufacture or design.

OMNI GEAR reserves the right to update or change its products; therefore, the information shown is subject to change.

If specific information is not present for your application or dimensional information. Please contact OMNI GEAR.

HP and Torque Ratings

Series LR-200	100 RPM		540 RPM		1000 RPM		1750 RPM	
	Input HP	Output Torque	Input HP	Output Torque	Input HP	Output Torque	Input HP	Output Torque
Ratio								
2:1	1.2	1254	6.2	1195	11	1161	19	1124
1.5:1	2.2	1727	11	1635	20	1584	33	1527
1.35:1	2.5	1797	13	1697	22	1642	38	1582
1:1	3.5	2197	18	2062	32	1989	53	1909
1:1.35	2.8	1534	14	1438	25	1386	43	1329
1:1.5	2.7	1347	14	1262	24	1216	41	1166
1:2	2.0	748	9.9	701	18	676	30	648

Note: The horsepower and torque ratings given are for reference purposes only. Due to various application conditions the horsepower and torque ratings shown may result in higher or lower capacities and in certain cases the max. input rpm may be exceeded. For these reasons, customer testing for specific applications is strongly recommended.

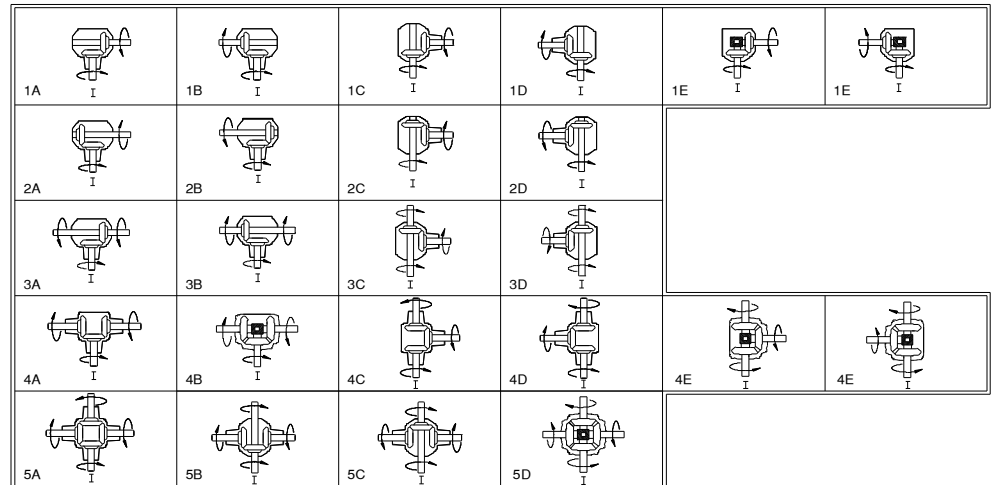
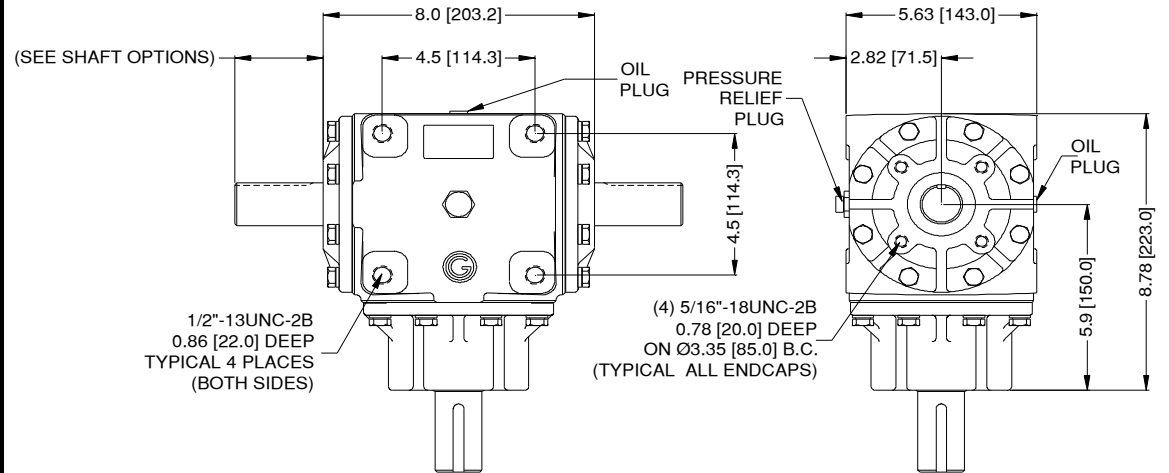


LR-400 Universal Right Angle Geardrive

Approximate Weight: 42 lbs. [19.1 kg]
 Approximate oil capacity: 30 oz. [0.89 liters]

LR-400 Universal Gear Drives Standard Feature Catalog Code Designations			
FEATURE	DESCRIPTION	CODE	
CONFIGURATION			Sample L41A
Unit	Reference Configuration Chart	1A	
RATIO			Sample L41A10
GEAR RATIO	2:1	05	
	1.5:1	06	
	1.35:1	07	
	1:1	10	
	1:1.35	13	
	1:1.5	15	
SHAFTS			Sample L41A10K4
SHAFT	1-1/4" w\ 1/4" Key	K3	
	1-3/8" w\ 5/16" Key	K4	
	1-3/8"-21 Spline	S2	
	1-3/8"-6A Spline	S4	
	SAE "A" Motor Mount	H1	
Standard Gearboxes have all shaft extensions the same. If multiple shaft extensions are required consult Omni Gear Engineering			Sample L41A10K4S
Standard Gearboxes are Straight Bevel Gears. If Spiral Bevel Gears are required, add "Code S" to the end of product code			
If Spiral Bevel Gears are required, the direction of rotation of the Input Shaft must be designated with "Code R" for Clockwise rotation or "Code L" for counter clockwise following the Code "S" for Spiral Bevel Gears			Sample L41A10K4SL
Gearbox configuration 1E and 1F are not available in 1:2 or 2:1 ratio.			

All Dimensions in INCHES [mm]



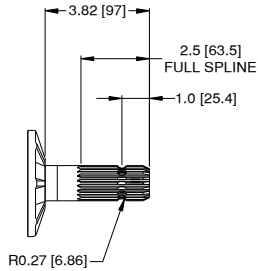
Configuration Chart



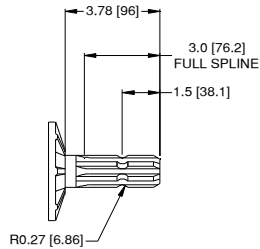
LR-400 Universal Shaft Options/Ratings

Shaft Options

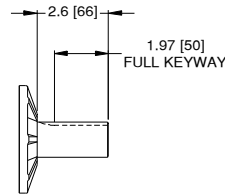
For custom shaft options, contact OMNI GEAR.



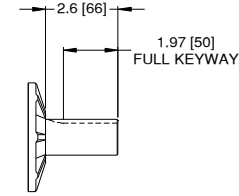
1-3/8"-21 Spline (S2)



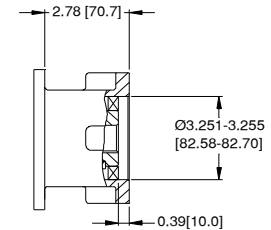
1-3/8"-6 Spline (S4)



1-1/4" w\1/4" Keyway (K3)



1-3/8" w\5/16" Keyway (K4)



SAE A Motor Mount 1" Dia.
Female w\1/4" Keyway (H1)

HP and Torque Ratings

Series LR-400	100 RPM		540 RPM		1000 RPM		1750 RPM	
	Input HP	Output Torque	Input HP	Output Torque	Input HP	Output Torque	Input HP	Output Torque
2:1	3.0	3039	15	2877	27	2786	46	2687
1.5:1	4.2	3341	21	3141	38	3031	64	2912
1.35:1	4.4	3243	22	3044	40	2935	67	2817
1:1	7.0	4433	35	4127	63	3964	105*	3788*
1:1.35	5.1	2754	26	2563	46	2460	76*	2351*
1:1.5	5.2	2607	26	2423	47	2325	78*	2220*
1:2	4.7	1836	24	1706	42	1637	71*	1563*

* Exceeds maximum recommended pitch line velocity for Straight Bevel Gear

NOTE: The information shown in this catalog is for general purposes only. Not to be used for manufacture or design.

OMNI GEAR reserves the right to update or change its products; therefore, the information shown is subject to change.

If specific information is not present for your application or dimensional information. Please contact OMNI GEAR.

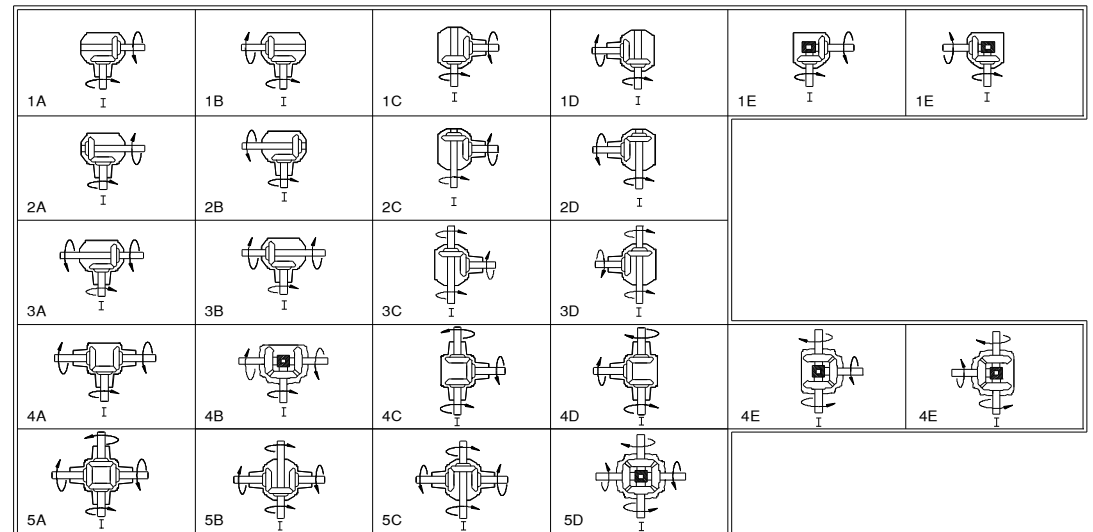
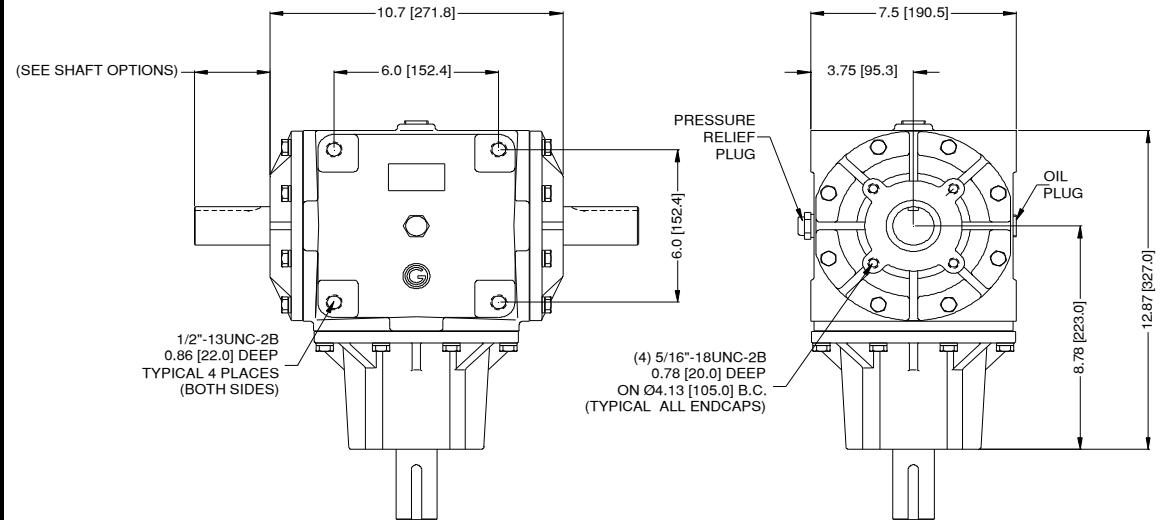
Note: The horsepower and torque ratings given are for reference purposes only. Due to various application conditions the horsepower and torque ratings shown may result in higher or lower capacities and in certain cases the max. input rpm may be exceeded. For these reasons, customer testing for specific applications is strongly recommended.

LR-500 Universal Right Angle Geardrive

Approximate Weight: 98 lbs. [44.5 kg]
 Approximate oil capacity: 61 oz. [1.8 liters]

LR-500 Universal Gear Drives Standard Feature Catalog Code Designations			Sample L51A
FEATURE	DESCRIPTION	CODE	
CONFIGURATION			Sample L51A
Unit	Reference Configuration Chart	1A	
RATIO			Sample L51A10
GEAR RATIO	2:1	05	
	1.5:1	06	
	1.35:1	07	
	1:1	10	
	1:1.35	13	
	1:1.5	15	
SHAFTS			Sample L51A10K5
SHAFT	1-1/2" w\ 3/8" Key	K5	
	1-3/4" w\ 3/8" Key*	K8	
	1-3/8"-6A Spline	S1	
	1-3/8"-21 Spline	S2	
	1-3/4"-20 Spline*	S3	
If multiple shaft extensions are required consult Omni Gear Engineering Standard Gearboxes are Straight Bevel Gears. If Spiral Bevel Gears are required, add "Code S" to the end of product code If Spiral Bevel Gears are required, the direction of rotation of the Input Shaft must be designated with "Code R" for Clockwise rotation or "Code L" for counter clockwise following the Code "S" for Spiral Bevel Gears Gearbox configuration 1E and 1F are not available in 1:2 or 2:1 ratio. * 1 3/4" diameter shaft not available with 2:1 or 1:2 ratio			Sample L51A10K5S Sample L51A10K5SL

All Dimensions in INCHES [mm]



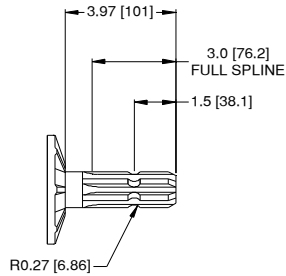
Configuration Chart



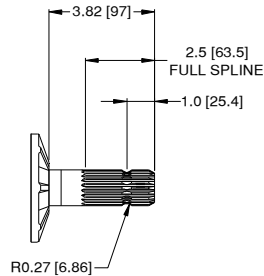
LR-500 Universal Shaft Options/Ratings

Shaft Options

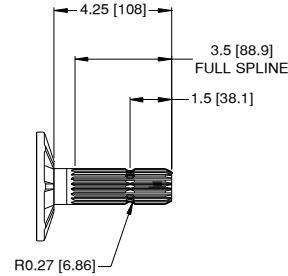
For custom shaft options, contact OMNI GEAR.



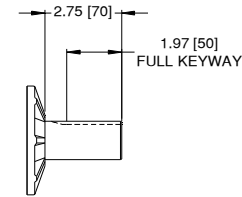
1-3/8"-6 Spline (S1)



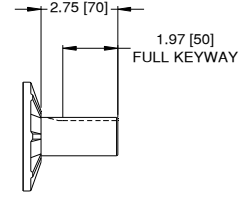
1-3/8"-21 Spline (S2)



1-3/4"-20 Spline (S3)



1-1/2" w\3/8" Keyway (K5)



1-3/4" w\3/8" Keyway (K8)

HP and Torque Ratings

Series LR-500	100 RPM		540 RPM		1000 RPM		1750 RPM	
	Input HP	Output Torque	Input HP	Output Torque	Input HP	Output Torque	Input HP	Output Torque
Ratio								
2:1	6.9	7021	35	6590	62	6355	105	6100
1.5:1	12	9608	60	8946	108	8591	180*	8211*
1.35:1	13	9264	63	8610	112	8261	188*	7888*
1:1	20	12806	101	11782	178	11247	296*	10685*
1:1.35	15	7858	80	7183	128	6909	212*	6566*
1:1.5	15	7486	75	6882	132*	6567*	219*	6237*
1:2	11	4245	54	3903	96*	3724*	159*	3537*

* Exceeds maximum recommended pitch line velocity for Straight Bevel Gear

NOTE: The information shown in this catalog is for general purposes only. Not to be used for manufacture or design.

OMNI GEAR reserves the right to update or change its products; therefore, the information shown is subject to change.

If specific information is not present for your application or dimensional information. Please contact OMNI GEAR.

Note: The horsepower and torque ratings given are for reference purposes only. Due to various application conditions the horsepower and torque ratings shown may result in higher or lower capacities and in certain cases the max. input rpm may be exceeded. For these reasons, customer testing for specific applications is strongly recommended.

LR-600 Universal Right Angle Geardrive

Approximate Weight: 185 lbs. [83.9 kg]
Approximate oil capacity: 123 oz. [3.6 liters]

LR-600 Universal Gear Drives Standard Feature Catalog Code Designations			
FEATURE	DESCRIPTION	CODE	Sample L61A
CONFIGURATION			
Unit	Reference Configuration Chart	1A	
RATIO			
GEAR RATIO	2:1	05	Sample L61A10
	1.5:1	06	
	1.35:1	07	
	1:1	10	
	1:1.35	13	
	1:1.5	15	
	1:1.75	17	
	1:2	20	
SHAFTS			
SHAFT	1-3/4" w\ 3/8" Key	K8	Sample L61A10K6
	1-3/4"-20 Spline	S3	

Standard Gearboxes have all shaft extensions the same.
 If multiple shaft extensions are required consult
 Omni Gear Engineering

Standard Gearboxes are Straight Bevel Gears. If Spiral
 Bevel Gears are required, add "Code S" to the end of
 product code

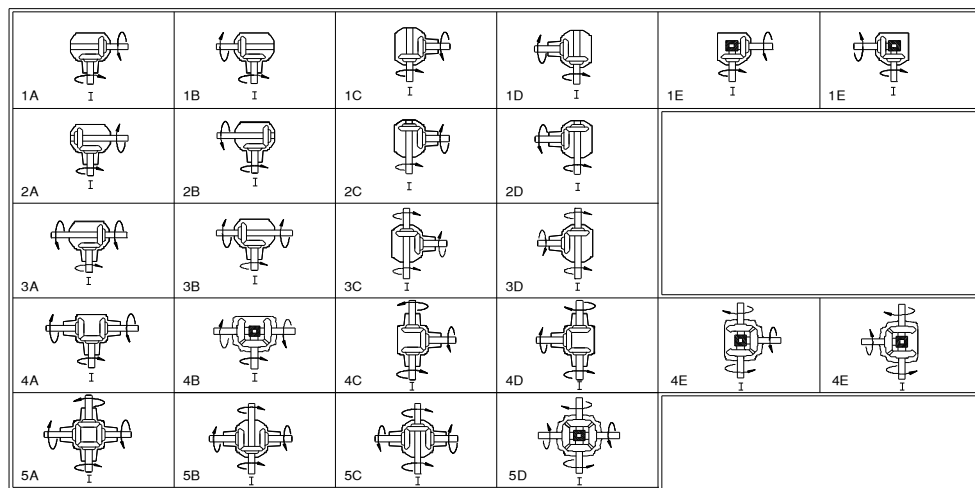
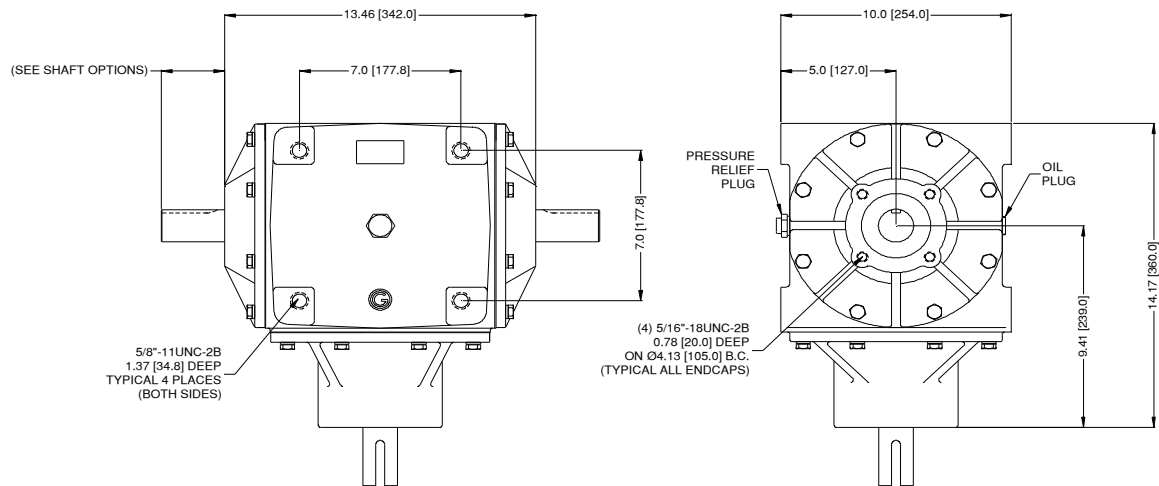
If Spiral Bevel Gears are required, the direction of
 rotation of the Input Shaft must be designated with
 "Code R" for Clockwise rotation or "Code L" for counter
 clockwise following the Code "S" for Spiral Bevel Gears

Gearbox configuration 1E and 1F are not available in
 1:2 or 2:1 ratio.

Sample
L61A10K6S

Sample
L61A10K6SL

All Dimensions in INCHES [mm]

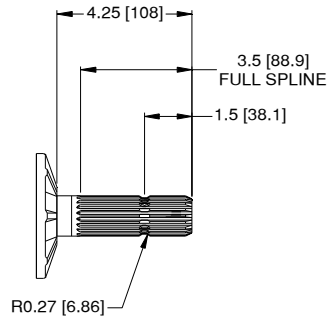


Configuration Chart

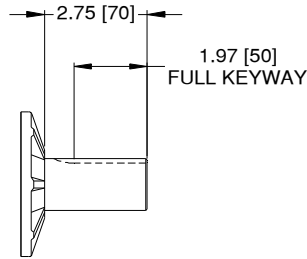
LR-600 Universal Shaft Options/Ratings

Shaft Options

For custom shaft options, contact OMNI GEAR.



1-3/4"-20 Spline (S3)



1-3/4" w 3/8" Keyway (K8)

HP and Torque Ratings

Series LR-600	100 RPM		540 RPM		1000 RPM		1750 RPM	
	Input HP	Output Torque	Input HP	Output Torque	Input HP	Output Torque	Input HP	Output Torque
2:1	14	14711	72	13697	127	13154	213*	12572*
1.5:1	20	16195	101	14984	180	14344	300*	13666*
1.35:1	21	15705	106	14502	189	13870	314*	13201*
1:1	30	18669	146	17085	258*	16268*	428*	15416*
1:1.35	25	13316	121	12174	214*	11586*	355*	10974*
1:1.5	25	12614	125	11514	220*	10950*	364*	10363*
1:1.75	28	12073	137	10989	242*	10436*	399*	9864*
1:2	23	8764	112	7977	197*	7576*	326*	7160*

* Exceeds maximum recommended pitch line velocity for Straight Bevel Gear

Note: The horsepower and torque ratings given are for reference purposes only. Due to various application conditions the horsepower and torque ratings shown may result in higher or lower capacities and in certain cases the max. input rpm may be exceeded. For these reasons, customer testing for specific applications is strongly recommended.

NOTE: The information shown in this catalog is for general purposes only. Not to be used for manufacture or design.

OMNI GEAR reserves the right to update or change its products; therefore, the information shown is subject to change.

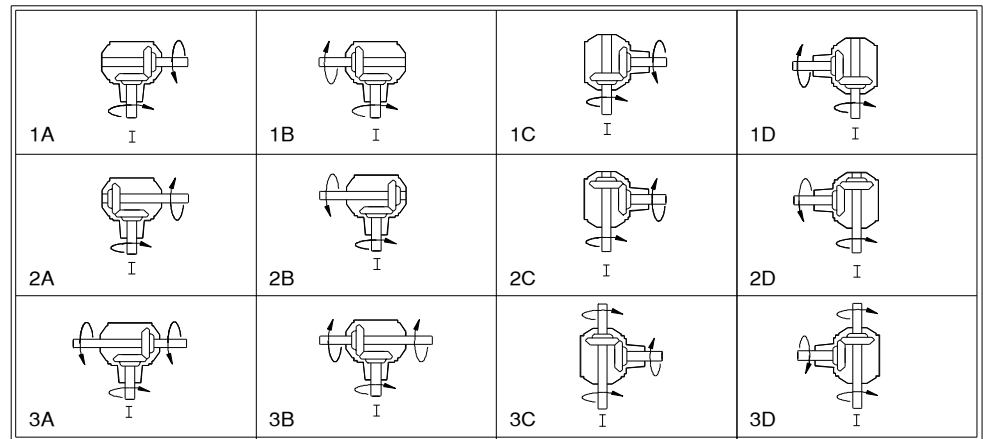
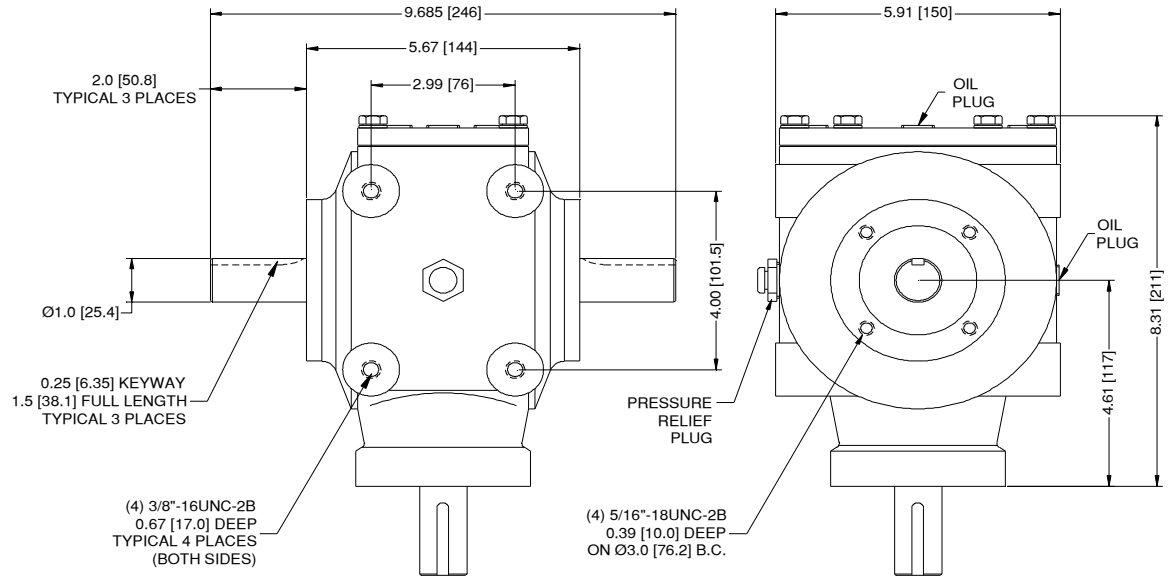
If specific information is not present for your application or dimensional information. Please contact OMNI GEAR.

HR-200 Universal Right Angle Geardrive

Approximate Weight: 25 lbs. [11.4 kg]
 Approximate oil capacity: 24 oz. [0.71 liters]

HR-200 Universal Gear Drives Standard Feature Catalog Code Designations		
FEATURE	DESCRIPTION	CODE
	CONFIGURATION	
	Reference Configuration Chart	1A
	RATIO	
GEAR RATIO	3.9:1	02
	3:1	03
	2.54:1	04
	2.08:1	05
	1:2.08	21
	1:2.54	25
	1:3	30
	1:3.9	39
	SHAFTS	
SHAFT	1" w\ 1/4" Key	K2
Standard Gearboxes have all shaft extensions the same. If multiple shaft extensions are required consult Omni Gear Engineering		Sample H21A02K2
Standard Gearboxes are Straight Bevel Gears. If Spiral Bevel Gears are required, add "Code S" to the end of product code		Sample H21A02K2S
If Spiral Bevel Gears are required, the direction of rotation of the Input Shaft must be designated with "Code R" for Clockwise rotation or "Code L" for counter clockwise following the Code "S" for Spiral Bevel Gears		Sample H21A02K2SL

All Dimensions in INCHES [mm]



Configuration Chart

HR-200 Universal Shaft Options/Ratings

Shaft Options

For custom shaft options, contact OMNI GEAR.

NOTE: The information shown in this catalog is for general purposes only. Not to be used for manufacture or design.

OMNI GEAR reserves the right to update or change its products; therefore, the information shown is subject to change.

If specific information is not present for your application or dimensional information. Please contact OMNI GEAR.

HP and Torque Ratings

Series HR-200	100 RPM		540 RPM		1000 RPM		1750 RPM		2000 RPM		3000 RPM	
	Input HP	Output Torque	Input HP	Output Torque	Input HP	Output Torque	Input HP	Output Torque	Input HP	Output Torque	Input HP	Output Torque
3.9:1	1.3	2445	6.8	2343	12	2285	21	2219	24	2202	34	2144
3:1	2.1	3094	11	2947	20	2864	33	2772	38	2747	55	2667
2.54:1	2.6	3235	13	3072	24	2981	41	2880	46	2854	67	2766
2.08:1	3.3	3370	17	3189	30	3089	51	2978	57	2949	83*	2854*
1:2.08	5.3	2026	26	1879	47	1802	78*	1719*	88*	1697*	-	-
1:2.54	5.0	1606	25	1487	45	1425	74*	1358*	84*	1341*	-	-
1:3	4.8	1303	24	1206	42	1154	71*	1100*	-	-	-	-
1:3.9	3.7	798	19	740	33	709	55*	676*	63*	667*	-	-

* Exceeds maximum recommended pitch line velocity for Straight Bevel Gear

Note: The horsepower and torque ratings given are for reference purposes only. Due to various application conditions the horsepower and torque ratings shown may result in higher or lower capacities and in certain cases the max. input rpm may be exceeded. For these reasons, customer testing for specific applications is strongly recommended.

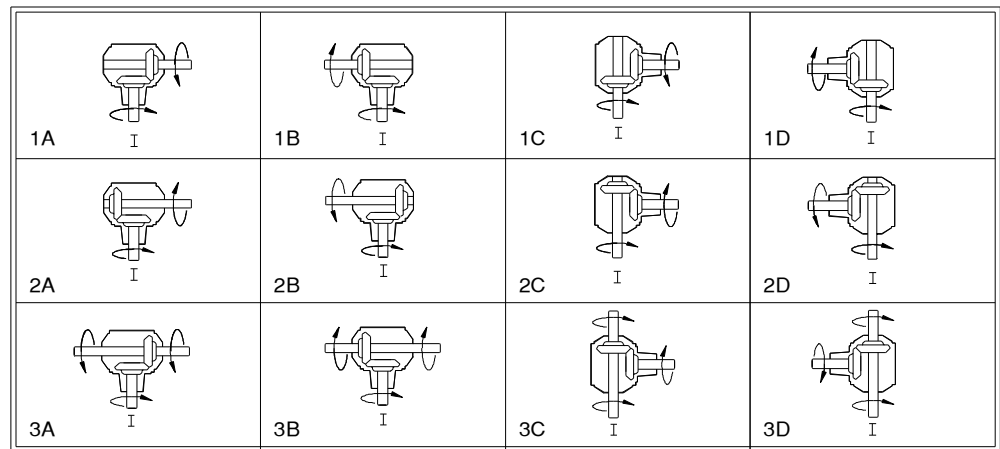
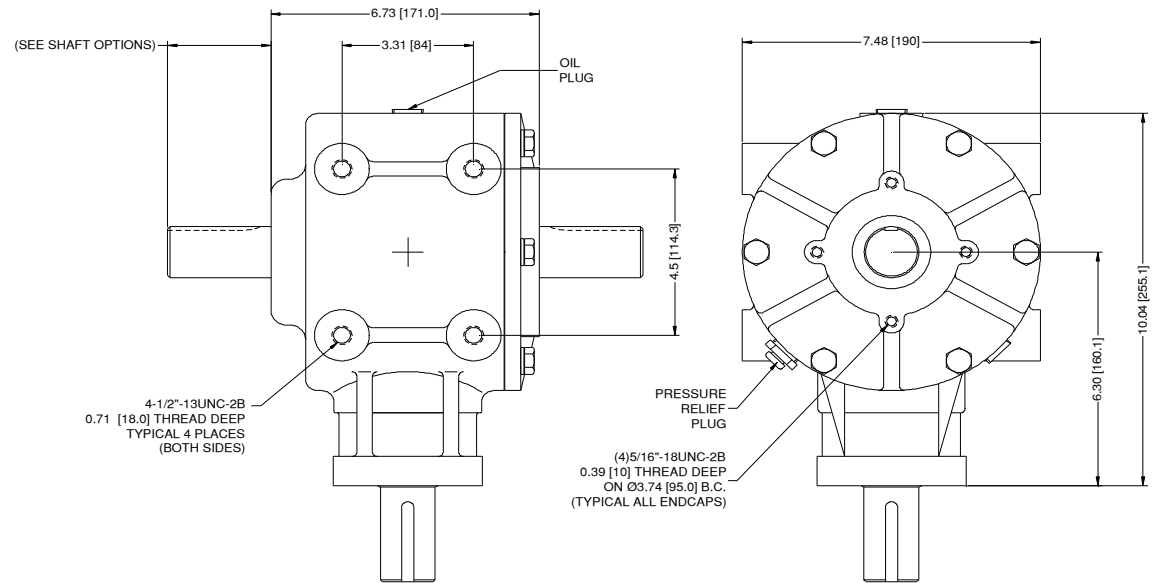


HR-400 Universal Right Angle Geardrive

Approximate Weight: 49 lbs. [22.2 kg]
 Approximate oil capacity: 40 oz. [1.2 liters]

HR-400 Universal Gear Drives Standard Feature Catalog Code Designations			
FEATURE	DESCRIPTION	CODE	Sample H41A
CONFIGURATION			
Reference Configuration Chart		1A	
RATIO			
GEAR RATIO	5.33:1	01	Sample H41A01
	4.5:1	02	
	3.1:1	03	
	2.58:1	04	
	1.93:1	05	
	1:2.58	26	
	1:3.1	30	
	1:4.5	45	
	1:5.33	53	
SHAFTS			
SHAFT	1-3/8"-6A	S1	Sample H41A01S1
	1-3/8"-21	S2	
	1-3/8" w/5/16" Key	K4	
Standard Gearboxes have all shaft extensions the same. If multiple shaft extensions are required consult Omni Gear Engineering			Sample H41A01S1S
Standard Gearboxes are Straight Bevel Gears. If Spiral Bevel Gears are required, add "Code S" to the end of product code			
If Spiral Bevel Gears are required, the direction of rotation of the Input Shaft must be designated with "Code R" for Clockwise rotation or "Code L" for counter clockwise following the Code "S" for Spiral Bevel Gears			
			Sample H41A01S1SL

All Dimensions in INCHES [mm]

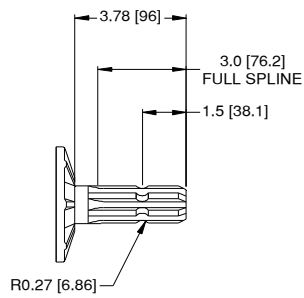


Configuration Chart

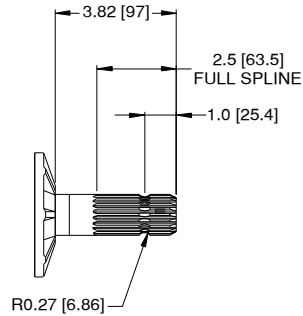
HR-400 Universal Shaft Options/Ratings

Shaft Options

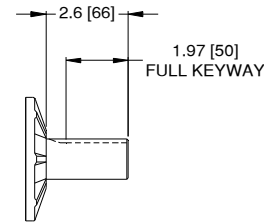
For custom shaft options, contact OMNI GEAR.



1-3/8"-6 Spline (S1)



1-3/8"-21 Spline (S2)



1-3/8" w\5/16" Keyway (K4)

NOTE: The information shown in this catalog is for general purposes only. Not to be used for manufacture or design.

OMNI GEAR reserves the right to update or change its products; therefore, the information shown is subject to change.

If specific information is not present for your application or dimensional information. Please contact OMNI GEAR.

HP and Torque Ratings

Series HR-400	100 RPM		540 RPM		1000 RPM		1750 RPM		2000 RPM	
	Input HP	Output Torque	Input HP	Output Torque	Input HP	Output Torque	Input HP	Output Torque	Input HP	Output Torque
5.33:1	1.5	3990	7.9	3825	14	3731	24	3624	27	3596
4.5:1	2.0	4387	11	4195	19	4087	32	3965	37	3932
3:1	4.0	5788	21	5487	37	5320	63	5135	71	5086
2.58:1	4.8	6370	24	6011	44	5813	74	5597	83	5540
1.93:1	6.9	6880	35	6458	63	6228	105	5987	119*	5912*
1:1.93	11.0	4287	53	3945	94*	3767*	-	-	-	-
1:2.58	9.8	2941	49	2700	86*	2575*	-	-	-	-
1:3	8.9	2466	44	2267	78*	2164*	-	-	-	-
1:4.5	6.7	1244	33	1143	59*	1091*	-	-	-	-
1:5.33	6.1	918	30	843	53*	804*	-	-	-	-

* Exceeds maximum recommended pitch line velocity for Straight Bevel Gear

Note: The horsepower and torque ratings given are for reference purposes only. Due to various application conditions the horsepower and torque ratings shown may result in higher or lower capacities and in certain cases the max. input rpm may be exceeded. For these reasons, customer testing for specific applications is strongly recommended.

HR-500 Universal Right Angle Geardrive

Approximate Weight: 65 lbs. [29.5 kg]
 Approximate oil capacity: 59 oz. [1.7 liters]

HR-500 Universal Gear Drives Standard Feature Catalog Code Designations

FEATURE	DESCRIPTION	CODE	Sample H51A
CONFIGURATION			
	Reference Configuration Chart	1A	
RATIO			Sample H51A02
GEAR RATIO	4.11:1	02	
	3.1:1	03	
	2.58:1	04	
	1.93:1	05	
	1:1.93	19	
	1:2.58	26	
	1:3.1	31	
	1:4.11	41	
SHAFTS			Sample H51A02S1
SHAFT	1-3/8"-6A	S1	
	1-3/8"-21	S2	
	1-1/2" w/3/8" Key	K5	

Standard Gearboxes have all shaft extensions the same.
 If multiple shaft extensions are required consult
 Omni Gear Engineering

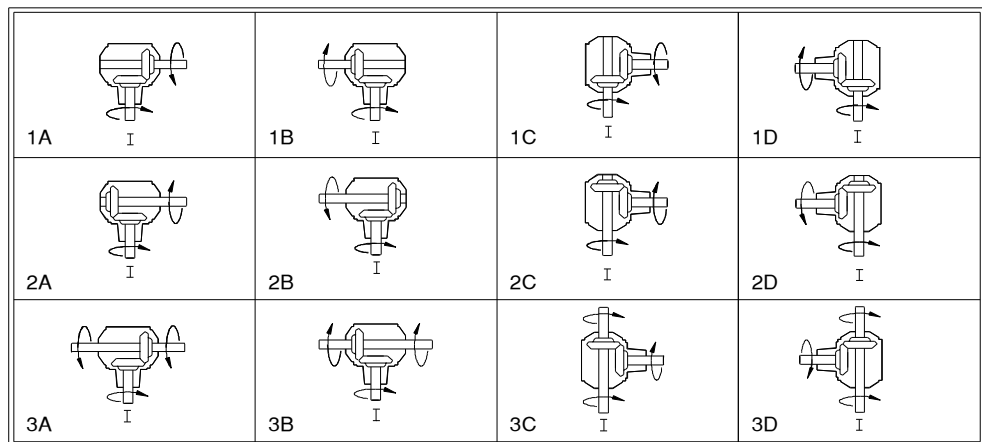
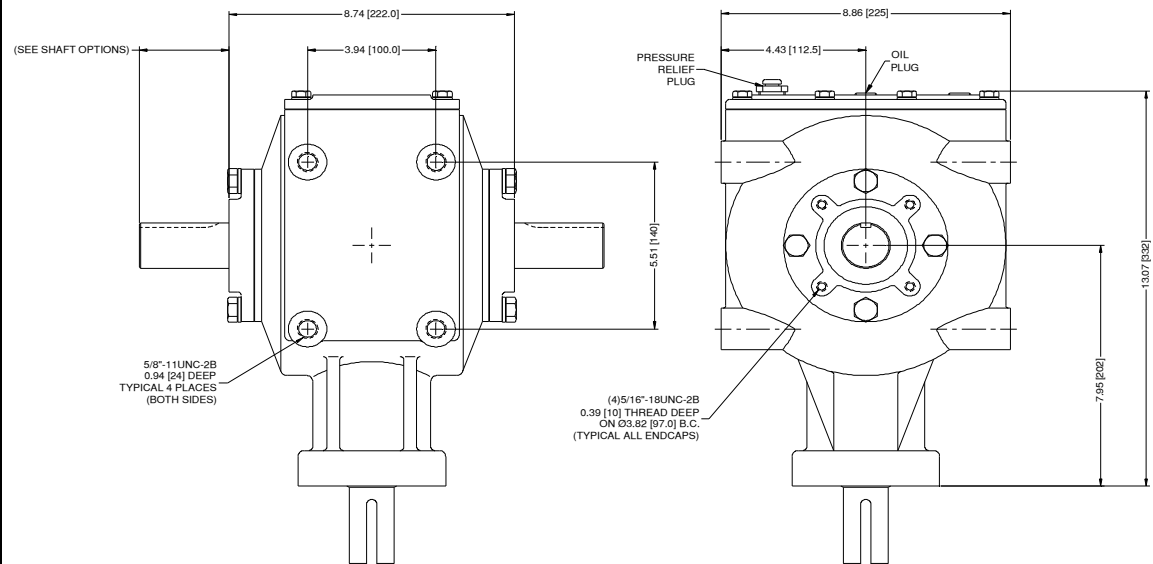
Standard Gearboxes are Straight Bevel Gears. If Spiral
 Bevel Gears are required, add "Code S" to the end of
 product code

If Spiral Bevel Gears are required, the direction of
 rotation of the Input Shaft must be designated with
 "Code R" for Clockwise rotation or "Code L" for counter
 clockwise following the Code "S" for Spiral Bevel Gears

Sample
H51A02S1S

Sample
H51A02S1SL

All Dimensions in INCHES [mm]



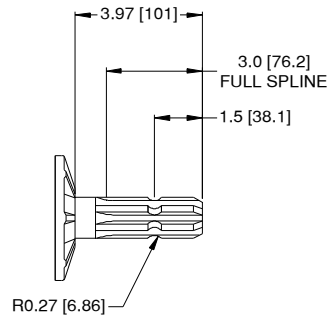
Configuration Chart



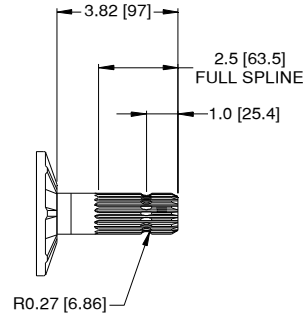
HR-500 Universal Shaft Options/Ratings

Shaft Options

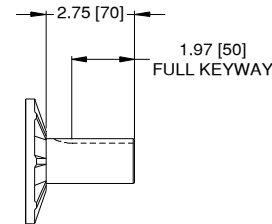
For custom shaft options, contact OMNI GEAR.



1-3/8"-6 Spline (S1)



1-3/8"-21 Spline (S2)



1-1/2" w\3/8" Keyway (K5)

NOTE: The information shown in this catalog is for general purposes only. Not to be used for manufacture or design.

OMNI GEAR reserves the right to update or change its products; therefore, the information shown is subject to change.

If specific information is not present for your application or dimensional information. Please contact OMNI GEAR.

HP and Torque Ratings

Series HR-500	100 RPM		540 RPM		1000 RPM		1750 RPM		2000 RPM	
	Input HP	Output Torque	Input HP	Output Torque	Input HP	Output Torque	Input HP	Output Torque	Input HP	Output Torque
4.11:1	3.3	6925	17	6582	30	6389	51	6176	58	6119
3.1:1	6.9	9885	35	9336	63	9031	106	8698	120	8611
2.58:1	6.5	8559	33	8058	59	7783	99	7482	112	7404
1.93:1	12	12000	61	11194	109	10760	182*	10294*	205*	10173*
1:1.93	19	7472	92	6825	162*	6493*	-	-	-	-
1:2.58	13	3950	65	3614	115*	3441*	-	-	-	-
1:3.1	15	4182	75	3818	132*	3632*	-	-	-	-
1:4.11	11	1996	52	1822	92*	1732*	-	-	-	-

* Exceeds maximum recommended pitch line velocity for Straight Bevel Gear

Note: The horsepower and torque ratings given are for reference purposes only. Due to various application conditions the horsepower and torque ratings shown may result in higher or lower capacities and in certain cases the max. input rpm may be exceeded. For these reasons, customer testing for specific applications is strongly recommended.

HR-600 Universal Right Angle Geardrive

Approximate Weight: 82 lbs. [37.2 kg]
Approximate oil capacity: 70 oz. [2.1 liters]

HR-600 Universal Gear Drives Standard Feature Catalog Code Designations

FEATURE	DESCRIPTION	CODE	Sample H61A
CONFIGURATION			
	Reference Configuration Chart	1A	
RATIO			
GEAR RATIO	4.11:1	02	Sample H61A02
	3.1:1	03	
	2.46:1	04	
	1.93:1	05	
	1:1.93	19	
	1:2.46	24	
	1:3.1	31	
	1:4.11	41	
SHAFTS			
SHAFT	1-3/4" - 20 1-3/4" w/1/2" Key	S3 K7	Sample H61A02S3

Standard Gearboxes have all shaft extensions the same.
 If multiple shaft extensions are required consult
 Omni Gear Engineering

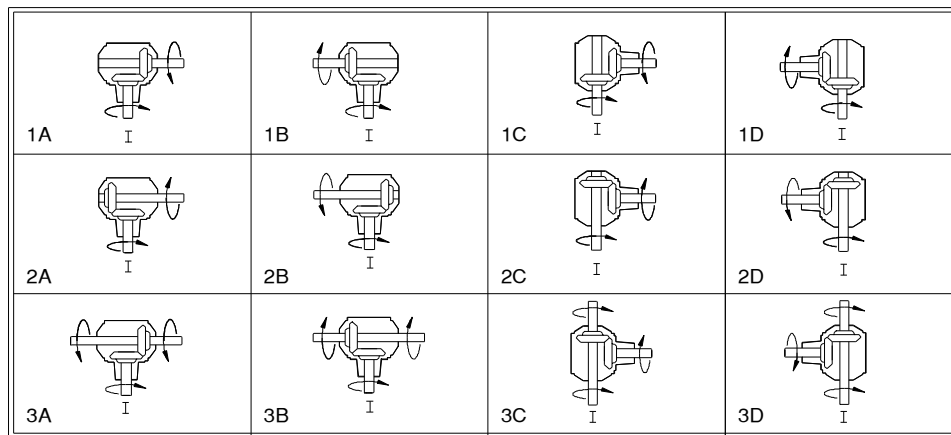
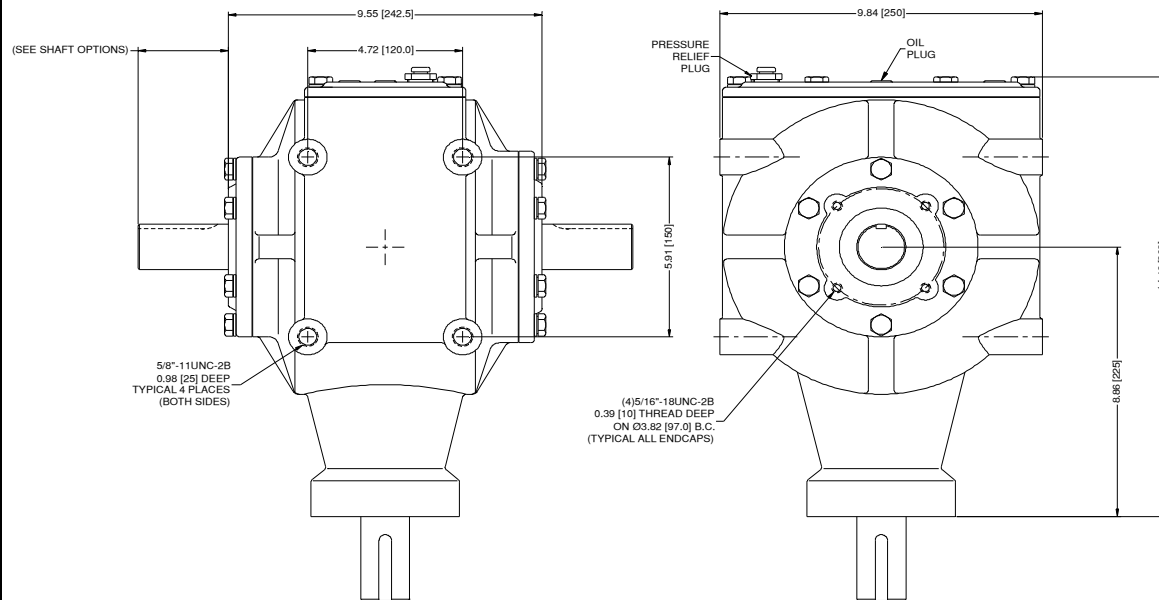
Standard Gearboxes are Straight Bevel Gears. If Spiral
 Bevel Gears are required, add "Code S" to the end of
 product code

If Spiral Bevel Gears are required, the direction of
 rotation of the Input Shaft must be designated with
 "Code R" for Clockwise rotation or "Code L" for counter
 clockwise following the Code "S" for Spiral Bevel Gears

Sample
H61A02S3S

Sample
H61A02S3SL

All Dimensions in INCHES [mm]

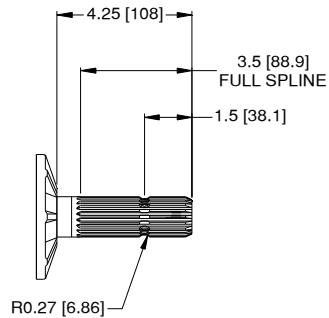


Configuration Chart

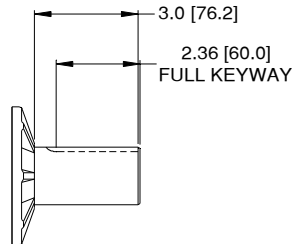
HR-600 Universal Shaft Options/Ratings

Shaft Options

For custom shaft options, contact OMNI GEAR.



1-3/4"-20 Spline (S3)



1-3/4" w\1/2" Keyway (K7)

NOTE: The information shown in this catalog is for general purposes only. Not to be used for manufacture or design.

OMNI GEAR reserves the right to update or change its products; therefore, the information shown is subject to change.

If specific information is not present for your application or dimensional information. Please contact OMNI GEAR.

HP and Torque Ratings

Series HR-600	100 RPM		540 RPM		1000 RPM		1750 RPM		2000 RPM	
	Input HP	Output Torque	Input HP	Output Torque	Input HP	Output Torque	Input HP	Output Torque	Input HP	Output Torque
6.14:1	2.8	8310	14	7943	26	7734	44	7500	50	7438
4.11:1	5.2	10824	26	10248	47	9927	80	9575	90	9482
3.1:1	10	15053	53	14161	95	13672	160	13139	181	12999
2.46:1	13	14992	63	14032	113	13512	189*	12950*	214*	12803*
2.07:1	17	17775	85	16534	151	15870	253*	15161*	285*	14977*
1.93:1	19	18732	95	17388	168	16673	281*	15910*	317*	15713*
1:1.93	29	11655	142	10582	250*	10039*	-	-	-	-
1:2.07	28	10407	135	9448	237*	8963*	-	-	-	-
1:2.46	23	7649	113	6956	199*	6604*	-	-	-	-
1:3.1	23	6361	113	5776	198*	5479*	-	-	-	-
1:4.11	16	3116	81	2827	142*	2681*	-	-	-	-
1:6.14	13	1676	61	1522	108*	1444*	-	-	-	-

* Exceeds maximum recommended pitch line velocity for Straight Bevel Gear

Note: The horsepower and torque ratings given are for reference purposes only. Due to various application conditions the horsepower and torque ratings shown may result in higher or lower capacities and in certain cases the max. input rpm may be exceeded. For these reasons, customer testing for specific applications is strongly recommended.

Limited Warranty

Omni Gear warrants its Products to be free defects in materials and workmanship when installed and maintained consistent with Omni Gear's specifications.

Unless otherwise specified below, each Product is warranted for a period of 12 months from the date of retail delivery or 18 months from the date of shipment from Omni Gear's facility, whichever shall first occur. All replacement or spare parts supplied by Omni Gear are warranted for a period of 3 months from the date of shipment from Omni Gear's Facility.

Should any part of an Omni Gear Product be found, under normal use and service, during the warranty period, to be defective, Omni Gear shall repair or replace, at its sole option, said part FOB Omni Gear's facility, Houston, Texas, provided the defective gear drive, in whole, is returned to Omni Gear's facility, charges prepaid, accompanied by a Return Goods Authorization Number ("RGA") and defect report detailing the claimed defect, and provided inspection of the original Product establishes the claimed defect to the satisfaction of Omni Gear.

In the event a warranty claim is denied, an Omni Gear Customer Service representative shall contact the customer and advise of the cost to repair the Product not covered under warranty. If the customer requests the Product be repaired, the repaired Product shall carry a Manufacturer's Remanufactured Warranty of 6 months from the date of remanufacture.

Warranty Disclaimer and Limitations of Liability

Omni Gear makes no other warranties. No warranty of merchantability or fitness for a particular purpose is implied.

Omni Gear's liability under this warranty is limited to the conditions stated herein. OMNI GEAR SHALL NOT IN ANY EVENT BE LIABLE FOR ANY CONSEQUENTIAL OR INCIDENTAL DAMAGE including, but not limited to expenses, attorney fees, loss of income or profits due to delay or defective material or workmanship and no allowance will be made for repairs, replacements, transportation or freight charges, or alterations UNLESS authorized in writing by Omni Gear. Omni Gear's warranty is subject to change without notice.

This warranty shall not apply to any Product upon which repairs or alterations have been made, improper lubrication, including type and frequency, excessive shock loading, improper application or for misused, neglected or incorrectly installed Product. This warranty shall not apply in the event proper gearbox lubrication and service is not maintained. All gearbox Product lubrication must be flushed and refilled after the first 100 hours of service, and then every 1000 hours thereafter. This warranty shall not apply to seals in the event they have been subjected to heat in excess of 200 degrees, paint, solvents or other chemicals in the assembly or painting processes. Any Omni Gear Product that remains unused for a period of 6 consecutive months during the warranty period shall not be warranted for leakage due to seal aging. The warranty for bearings shall be limited to the warranty provided by the bearing manufacturer. No Product will be eligible for warranty if rust or corrosion has started on internal surfaces.

If any provision of this warranty contravenes the law of any jurisdiction, such provision shall be inapplicable in such jurisdiction and the remainder of the warranty shall not be affected thereby. Legal proceedings arising out of the terms of Omni Gear's warranty must be commenced within one (1) year of the accrual of the cause of action or be forever barred.

Exceptions

Exceptions to Omni Gear's stated Warranty Policy must be in writing, and made a part of this Limited Warranty.

Customer

Product Group

Limited Warranty

Effective Date

