

# STEERING COLUMNS TYPE KK...



The KK Steering Columns transfer the torque from the steering wheel of the vehicle to the HKU, HKUS or other of the same class steering units. The KK steering columns are consisted of a pipe in which is centred the control shaft.

## MOUNTING

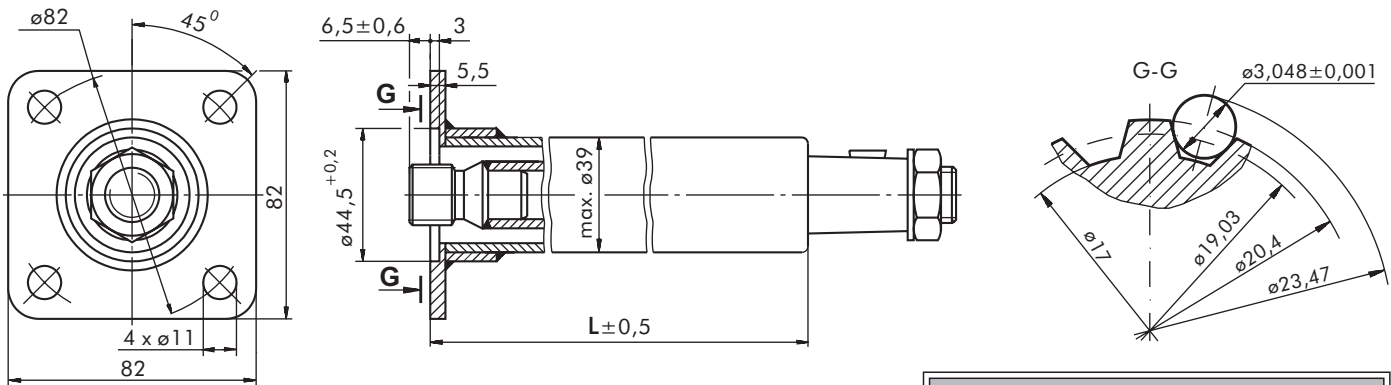
The KK steering column is hard-mounted to the steering unit by its welded flange using four screws M10 at minimal depth 10 mm fitted in the steering unit with tightening torque of 2 daNm.

Permissible loads on the steering column are as follows:

Max. torque applied to the steering wheel	24 daNm
Max. bending moment	20 daNm
Max. axial load	100 daN

The steering column must be additionally supported when the length L exceeds 150 mm.

## DIMENSIONS AND MOUNTING DATA



## SPECIFICATION DATA

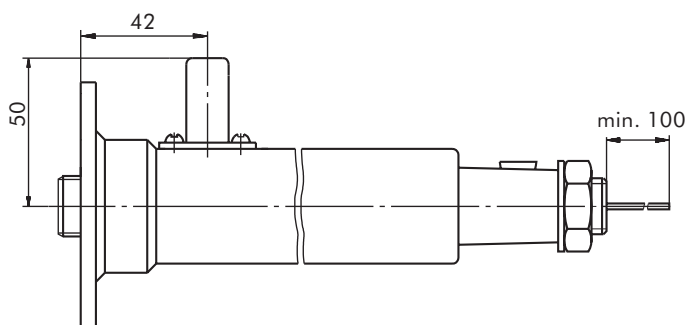
Parameters	Type			
	KK 75	KK 150	KK 390	KK 750
L [mm]	78	168,2	393	777,8
Weight, avd [kg]	0,75	1,1	1,9	3,3

Involute Spline Data		
Modul	m	1,5875
Number of Teeth	z	12
Pressure Angle	α	30°
Pitch	p <sub>t</sub>	4,986

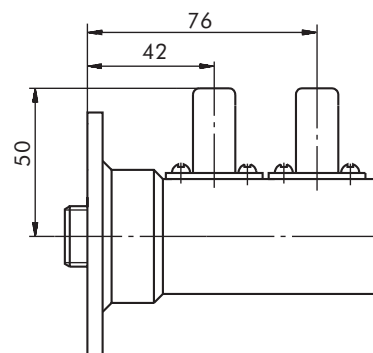
Please, contact factory or your regional manager regarding other lengths.

## SOUND SIGNAL CONNECTION

### E Option

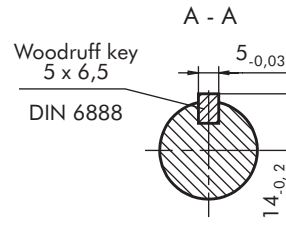
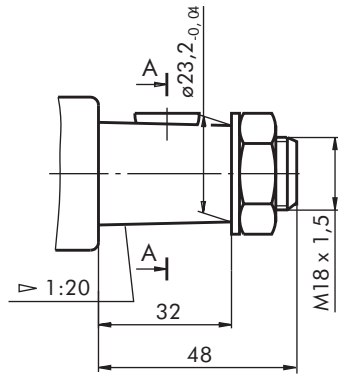


### EE Option

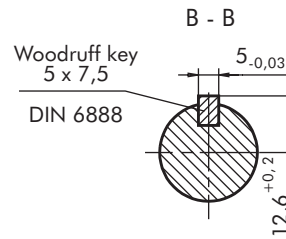
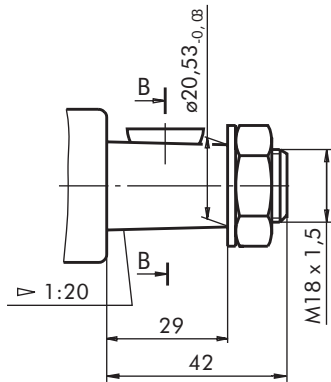


**SHAFT EXTENSIONS**

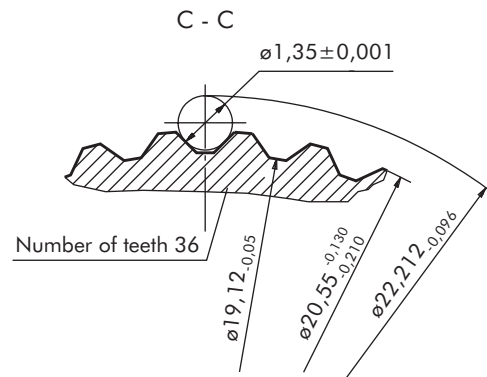
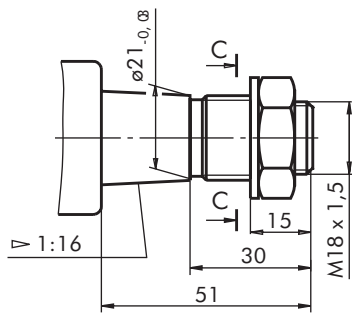
**TYPE I**



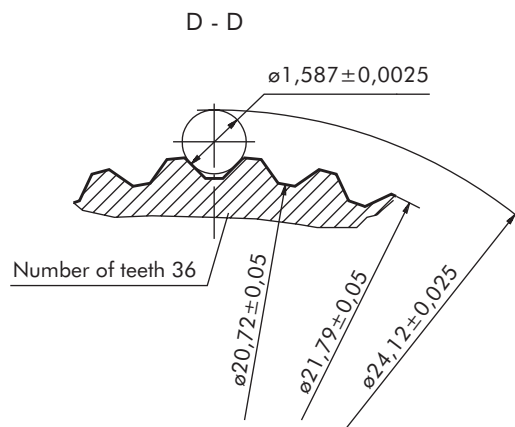
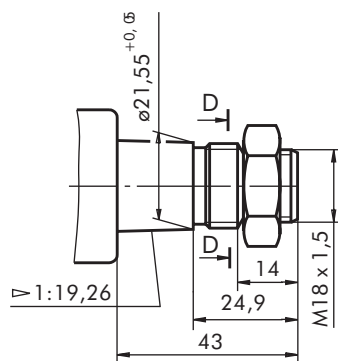
**TYPE II**



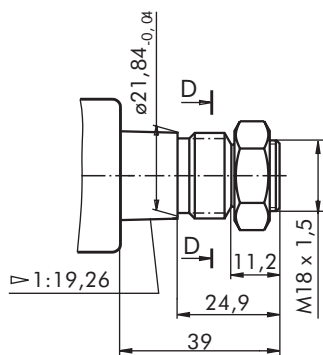
**TYPE III**



**TYPE IV**

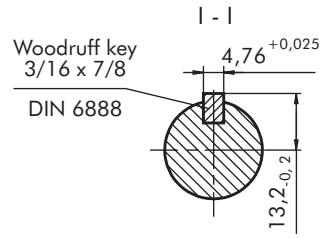
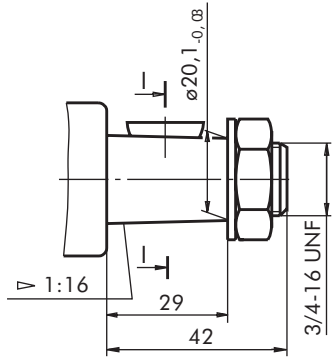


**TYPE V**

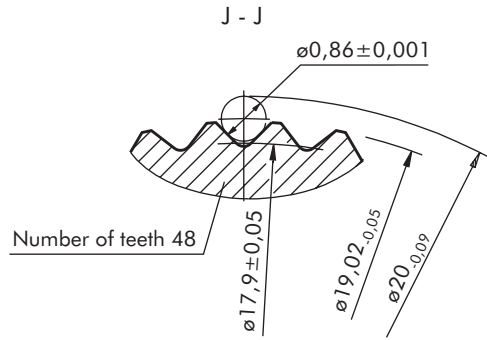
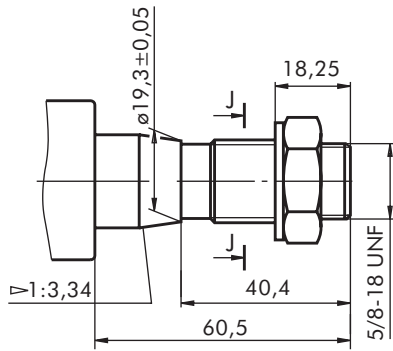


**SHAFT EXTENSIONS**

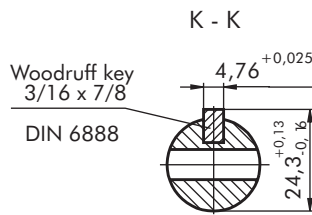
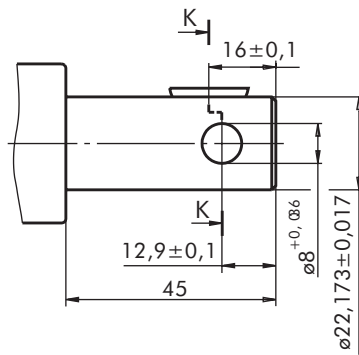
**TYPE VI**



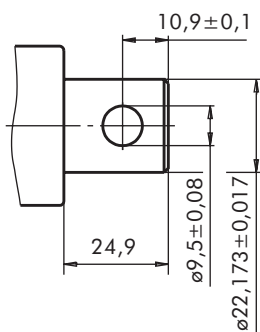
**TYPE VII**



**TYPE VIII**



**TYPE IX**



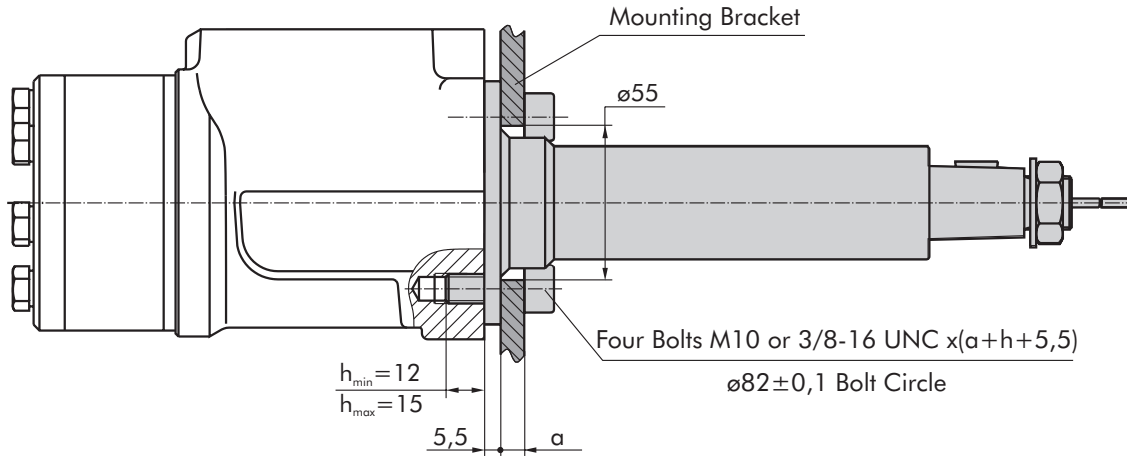
**INSTALLING**

For assembling the Steering column to the Steerin units must use:

For HKU.../... and HKU.../...M- four bolts M10

For HKU.../...A- four bolts 3/8-16 UNC

Tightening torque for bolts  $3 \pm 0,5$  daNm



**ORDER CODE**

	1	2	3	4	5
<b>KK</b>					

Pos.1 - **Length, mm** (acc. to table)

Pos.2 - **Shaft Extensions**

I, II, III, IV, V, VI, VII, VIII, IX

Pos.3 - **Signal Connection** (Option)

omit - without electric signal connection

**E** - with one electric signal connection

**EE** - with two electric signal connection

Pos.4 - **Option** (Paint)\*

omit - No Paint

**P** - Painted

**PC** - Corrosion Protected Paint

Pos.5 - **Design Series**

omit - Factory specified

**NOTES:**

\* Colour at customer's request.

The steering columns are yellow galvanized as standard.