



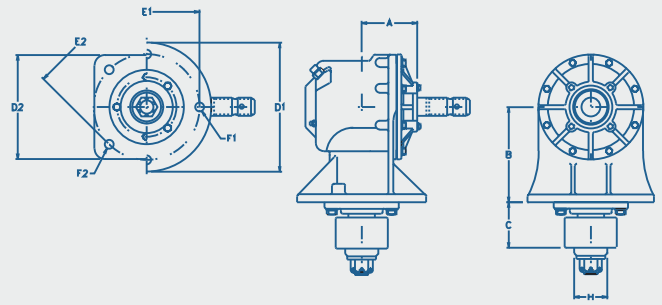
OMNI GEAR®

Rotary Cutter Gear Drives

Creating Value for our Customers  
[www.OmniGear.com](http://www.OmniGear.com)



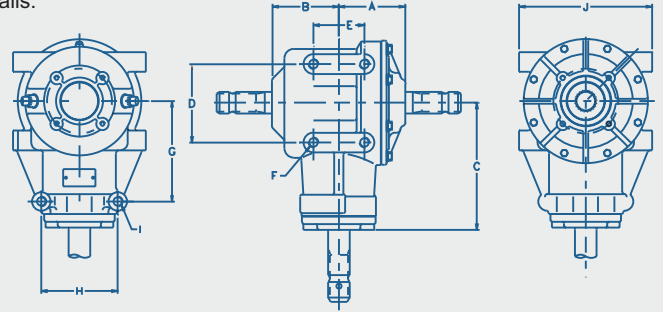
# Physical Dimensions



## Right Angle Drives

Model	Maximum Weight of Unit		CL to Thru Cap A		CL to Flange B		Flange to Hub Pilot C		Hub Pilot Diameter H		Flange Diameter D1		Bolt Hole Pattern E1		Mounting Holes F1		Flange Square Size D2		Bolt Hole Pattern E2		Mounting Holes F2	
	lb	kg	in	mm	in	mm	in	mm	in	mm	in	mm	in	mm	in	mm	in	mm	in	mm	in	mm
RC-20	34	15	3.0	76	6.5	165	2.40	61.0	-	-	-	-	-	-	-	-	6.18	157	6.8	171.5	(4) 0.67	(4) 17
RC-27	47	21	3.5	88	6.4	164	2.40	61.0	-	-	-	-	-	-	-	-	6.18	157	6.8	171.5	(4) 0.67	(4) 17
RC-30	51	23	3.9	100	6.4	164	3.30	84.0	2.5	63.5	-	-	-	-	-	-	6.89	175	6.8	171.5	(4) 0.67	(4) 17
RC-51	56	25	3.7	94	6.4	164	3.50	88.9	2.5	63.5	-	-	-	-	-	-	6.89	175	6.8	171.5	(4) 0.67	(4) 17
RC-61	81	37	4.2	107	7.2	183	3.50	88.9	2.5	63.5	9.5	242.0	8.0	203.2	(4) 0.787	(4) 20	-	-	-	-	-	-
RC-71	83	38	4.2	107	7.2	183	3.50	88.9	2.5	63.5	9.5	242.0	8.0	203.2	(4) 0.787	(4) 20	-	-	-	-	-	-
RC-81	98	45	4.6	116	11.0	279	3.50	88.9	2.5	63.5	9.6	245.0	8.0	203.2	(4) 0.787	(4) 20	-	-	-	-	-	-
RC-100	96	44	4.8	121	7.1	180	3.78	96.0	2.5	63.5	9.4	240.0	8.0	203.2	(4) 0.787	(4) 20	-	-	-	-	-	-
RC-130S	109	49	5.1	130	7.1	180	4.00	102.0	2.9	73.0	9.8	250.0	8.0	203.2	(6) 0.807	(6) 21	-	-	-	-	-	-
RC-130L	120	54	5.1	130	7.1	180	7.20	184.0	3.8	96.0	9.8	250.0	8.0	203.2	(6) 0.807	(6) 21	-	-	-	-	-	-
RC-145	110	50	5.6	142	8.9	225	8.05	204.5	3.8	96.0	10.2	260.0	8.0	203.2	(6) 0.807	(6) 21	-	-	-	-	-	-
RC-150L	145	66	5.1	130	11.0	280	7.20	184.0	3.8	96.0	9.8	250.0	8.0	203.2	(6) 0.807	(6) 21	-	-	-	-	-	-
RC-200	220	100	6.4	162	9.5	241	8.00	203.0	5.3	135.0	11.8	300.0	10	254.0	(6) 0.905	(6) 23	-	-	-	-	-	-

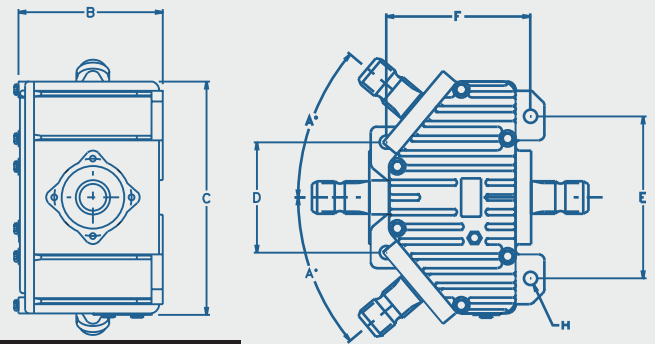
Custom shafts, oil ports and mounting hole positions available. Contact Omni Gear for details.



## Divider Drives- Side Mount 90°

Model	Maximum Weight of Unit		CL to Thru Cap A		CL to Hsg. end B		CL to Hsg. end C		Bolt Hole Pattern D		Bolt Hole Pattern E		Bolt Hole Pattern H		CL to Mtg. Holes G		Mounting Holes F		Mounting Holes I		Mounting Span J	
	lb	kg	in	mm	in	mm	in	mm	in	mm	in	mm	in	mm	in	mm					in	mm
RC-40T	45	20	3.9	100	2.8	71	7.5	191	4.5	113.0	2.75	69.9	4.75	120.7	5.75	146	(8) 5/8"-11UNC-2B		(8) 5/8"-11UNC-2B		6.0	152.4
RC-61T	70	32	4.2	107	4.3	108	8.0	204	5.0	127.0	3.25	82.6	4.88	123.8	6.40	162.7	(8) 5/8"-11UNC-2B		(2) 5/8"-11UNC-2B		8.0	203.2

Custom shafts, oil ports and mounting hole positions available. Contact Omni Gear for details.



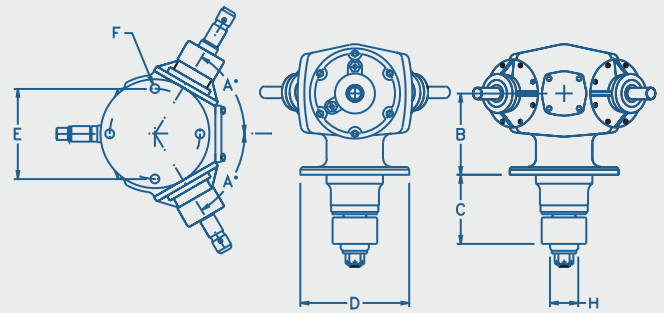
## Divider Drives 40°

Model	Maximum Weight of Unit		Shaft Angle A	Gearbox Height B		Gearbox Width C		Bolt Hole Pattern D		Bolt Hole Pattern E		Bolt Hole Pattern F		Mounting Holes H
	lb	kg		in	mm	in	mm	in	mm	in	mm	in	mm	
RCD-90	80	36	40	7.7	196	12.4	315	5.9	150	8.7	220	7.7	196	(4) 18mm thru
RCD-101	131	59	40	8.3	210	20.5	520	5.7	144	5.7	144	5.7	144	(4) 3/4"-10UNC-2B

Custom shafts, oil ports and mounting hole positions available. Contact Omni Gear for details.



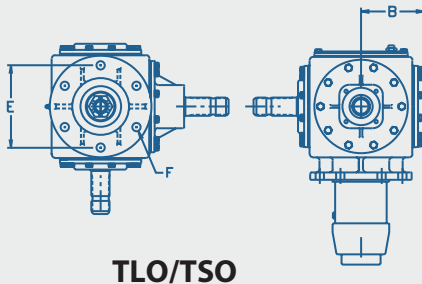
# Physical Dimensions



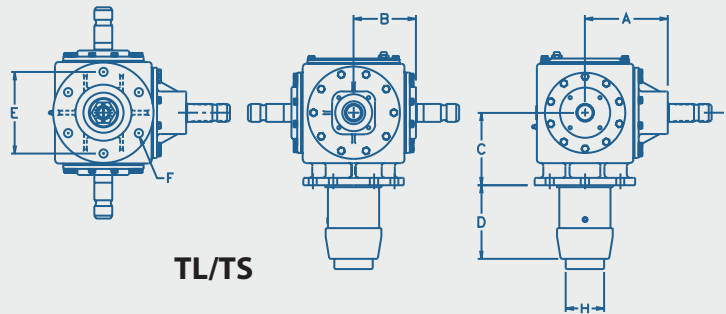
## Divider Drives-60°

Model	Maximum Weight of Unit		Shaft Angle A	CL to Flange B		Flange to Hub Pilot C		Hub Pilot Diameter H		Flange Diameter D		Bolt Hole Pattern E		Mounting Holes F	
	lb	kg		in	mm	in	mm	in	mm	in	mm	in	mm	in	mm
RC-110	140	64	60	7.2	183	6.1	156	2.5	64	9.6	245	8.0	203	(4) 0.787	(4) 20.0
RC-110Y	110	60	60	7.2	183	-	-	-	-	9.6	245	8.0	203	(4) 0.787	(4) 20.0

Custom shafts, oil ports and mounting hole positions available. Contact Omni Gear for details.



TLO/TSO



TL/TS

## Divider Drives- Base Mount 90°

Model	Maximum Weight of Unit		CL to Thru Cantilevered Cap A		CL to Thru Cap B		CL to Flange C		Flange to Hub Pilot D		Hub Pilot Diameter H		Bolt Hole Pattern E		Mounting Holes F	
	lb	kg	in	mm	in	mm	in	mm	in	mm	in	mm	in	mm	in	mm
RC-65TL	88	40	6.5	164	4.3	110	7.2	183	3.5	88.9	2.50	63.5	8.00	203.2	(4) 0.79	(4) 20.0
RC-65TLO	88	40	6.5	164	4.3	110	7.2	183	3.5	88.9	2.50	63.5	8.00	203.2	(4) 0.79	(4) 20.0
RC-91TL	200	91	4.6	116	7.5	191	10.9	278	3.5	88.9	2.50	63.5	8.00	203.2	(4) 0.79	(4) 20.0
RC-91TLO	200	91	4.6	116	7.5	191	10.9	278	3.5	88.9	2.50	63.5	8.00	203.2	(4) 0.79	(4) 20.0
RC-130T	125	57	8.1	206	6.1	155	7.1	180	-	-	-	-	8.00	203.2	(6) 0.807	(6) 20.5
RC-130TL	176	80	8.1	206	6.1	155	7.1	180	7.2	184.0	3.78	96.0	8.00	203.2	(6) 0.807	(6) 20.5
RC-130TLO	173	79	8.1	206	6.1	155	7.1	180	7.2	184.0	3.78	96.0	8.00	203.2	(6) 0.807	(6) 20.5
RC-130TS	165	75	8.1	206	6.1	155	7.1	180	4.0	102.0	2.87	73.0	8.00	203.2	(6) 0.807	(6) 20.5
RC-130TSO	162	74	8.1	206	6.1	155	7.1	180	4.0	102.0	2.87	73.0	8.00	203.2	(6) 0.807	(6) 20.5

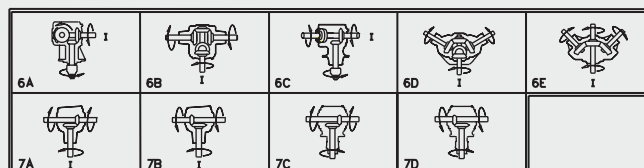
Custom shafts, oil ports and mounting hole positions available. Contact Omni Gear for details.

# Configuration Options

## Right Angle Drives



## Divider Drives



**Seals**

High quality triple-lip oil seals standard. Other options include Viton seals and cartridge type seals.

**Housing**

Ductile iron is standard.

**Spline Gearfit**

Splined gear to shaft connection is standard.

**Shaft Extensions**

Shaft extensions can be splined, keyed, or with pin holes. Multiple shaft extension units also available.

**End Caps**

Precision cast iron caps standard.

**Clutch**

Free wheel clutch optional.

**Pressure Relief Plug**

Pressure relief plug standard. Optional oil level available.

**Lubrication**

Units can be filled with mineral or synthetic oil/greases according to application requirements. Gearcase porting for oil flow to lower bearings standard.

**Gearing**

Forged blank, precision machine cut gearing is standard. Precision forged straight bevel, spiral bevel and lapped spiral bevel gearing also available.

**Coatings**

Red Oxide primer standard. Other coatings are available.

**Bearings**

Roller bearings standard in light duty units. ISO tapered bearings standard in larger units.

**Shafts**

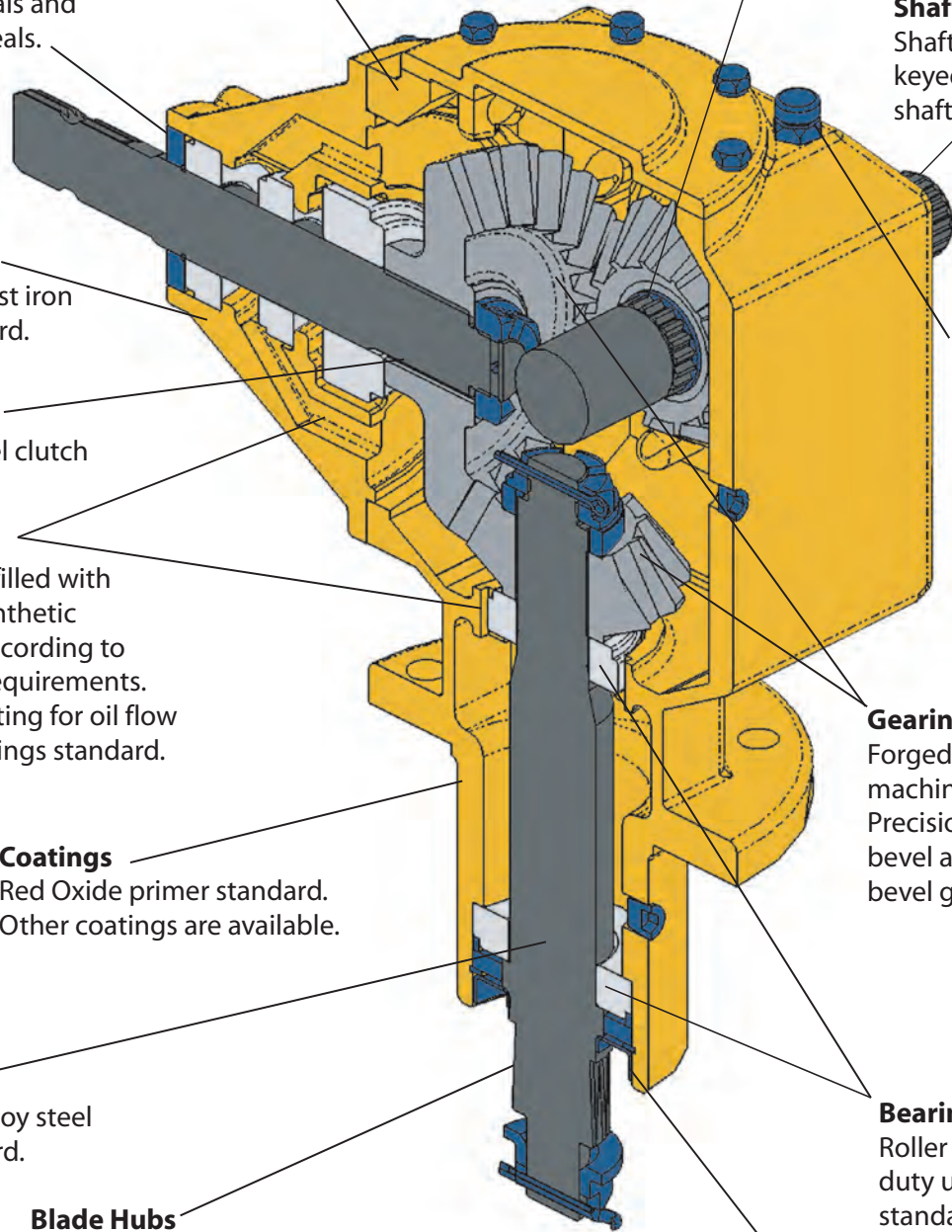
Carburized alloy steel shafts standard.

**Blade Hubs**

Blade hubs available. Seal protector hubs also available.

**Labyrinths**

Output seal labyrinths available for extra seal protection.



**OMNI GEAR®**



E-mail: [Sales@OmniGear.com](mailto:Sales@OmniGear.com) Web: [www.OmniGear.com](http://www.OmniGear.com)

©2003 Omni Gear®, All rights reserved



# RC-20 Series

Power: 15 - 18 hp  
11-21 kW

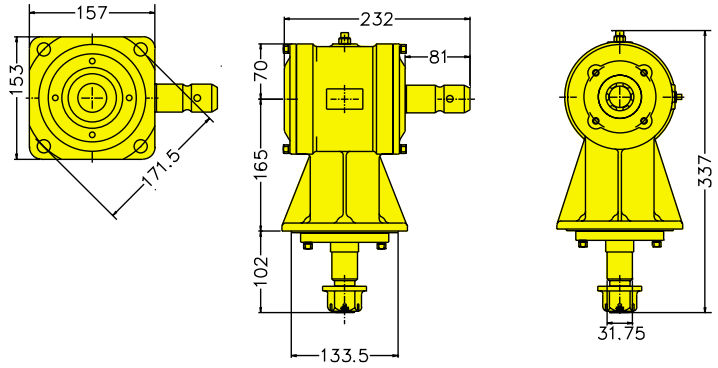
# Right Angle Drives

### Specifications

Torque: 1,750 - 3,267 lb.-in.  
198 - 369 Nm.  
Ratios: 1:2.5, 1:2.83  
Seals: Triple Lip Spring Loaded  
Bearings: Deep Groove Ball  
Oil Cap: 16 oz. (.47 L)  
Weight: 34 lbs. (15.4 kg)

### Applications

Finishing Mowers Rotary Cutters  
Rotary Slashers Toppers



# RC-27 Series

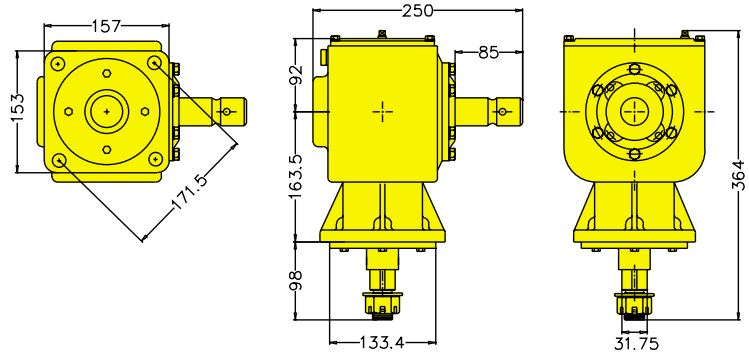
Power: 23 - 53 hp  
17 - 40 kW

### Specifications

Torque: 2,683 - 6,183 lb.-in.  
303 - 698 Nm.  
Ratios: 1:2.5, 1:2.83  
Seals: Double Lip Spring Loaded  
Bearings: Tapered Roller/Deep Groove Ball  
Oil Cap: 20 oz. (.59 L)  
Weight: 47 lbs. (21.3 kg)

### Applications

Finishing Mowers Rotary Cutters  
Rotary Slashers Toppers



# RC-30 Series

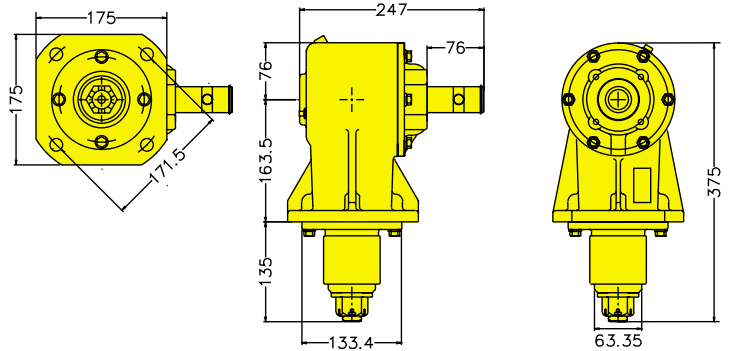
Power: 24 - 40 hp  
18 - 30 kW

### Specifications

Torque: 2,800 - 4,667 lb.-in.  
316 - 527 Nm.  
Ratios: 1:1.47, 1:1.71, 1:1.93  
Seals: Triple Lip Spring Loaded  
Bearings: Deep Groove Ball  
Oil Cap: 23 oz. (.68 L)  
Weight: 51 lbs. (23.1 kg)

### Applications

Finishing Mowers Rotary Cutters  
Rotary Slashers Toppers



# RC-51 Series

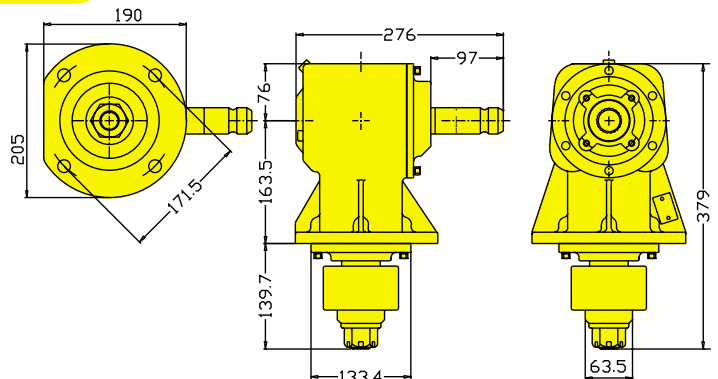
Power: 24 - 40 hp  
18 - 30 kW

### Specifications

Torque: 2,800 - 4,667 lb.-in.  
316 - 527 Nm.  
Ratios: 1:1.47, 1:1.71, 1:1.93  
Seals: Triple Lip Spring Loaded  
Bearings: Tapered Roller/Deep Groove Ball  
Oil Cap: 27 oz. (.80 L)  
Weight: 56 lbs. (25.4 kg)

### Applications

Rotary Cutters Rotary Slashers



**Gears:** Available with either straight bevel or spiral bevel gearing.

**Power:** Hp & Torque based on AGMA formula for continuous duty plus a service or load class factor.

**Shafting:** Various dimensional, metallurgical, and heat-treat options available.

**Bearings:** Geardrives available with various bearing life options.

**Lubrication:** Drives available with various lubes depending on operating characteristics.

# RC-61 Series

Power: 35 - 83 hp  
26 - 62 kW

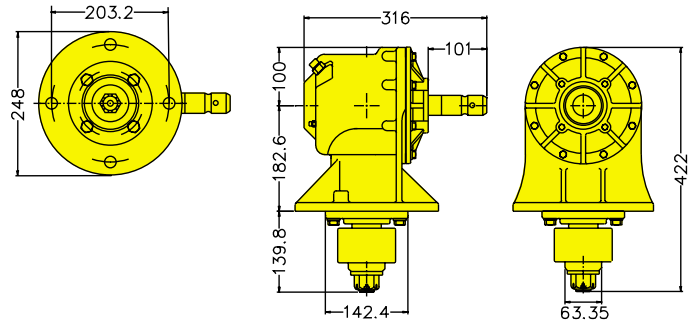
# Right Angle Drives

## Specifications

Torque: 4,083 - 9,683 lb.-in.  
461 - 1,093 Nm.  
Ratios: 1.21:1, 1:1, 1:1.21, 1:1.46, 1:1.93  
Seals: Triple Lip Spring Loaded  
Bearings: Taper Roller  
Oil Cap: 32 oz. (.95 L)  
Weight: 81 lbs. (36.7 kg)

## Applications

Rotary Cutters Rotary Slashers



# RC-71 Series

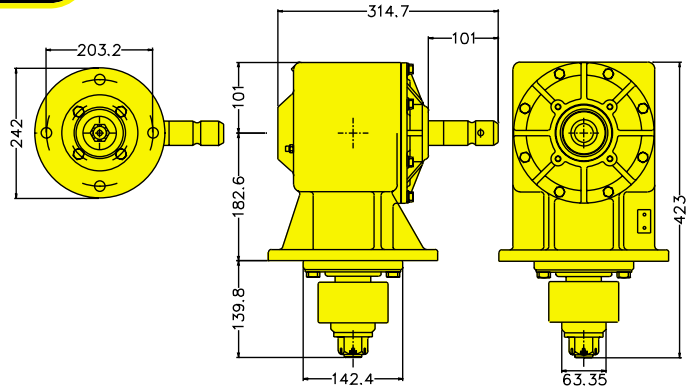
Power: 35 - 83 hp  
26 - 62 kW

## Specifications

Torque: 4,083 - 9,683 lb.-in.  
461 - 1,093 Nm.  
Ratios: 1.21:1, 1:1, 1:1.21, 1:1.46, 1:1.93  
Seals: Triple Lip Spring Loaded  
Bearings: Tapered Roller  
Oil Cap: 35 oz. (1.04 L)  
Weight: 83 lbs. (37.7 kg)

## Applications

Rotary Cutters Rotary Slashers



# RC-81 Series

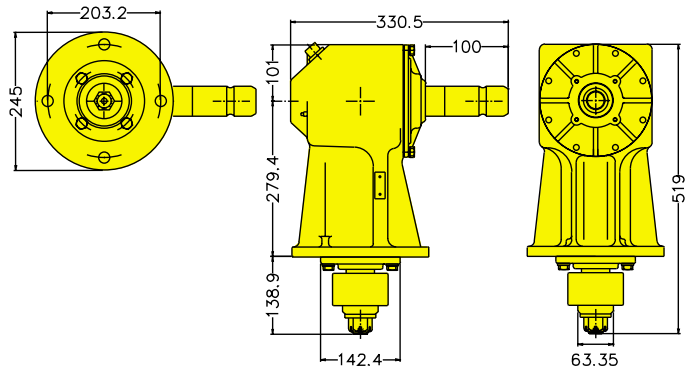
Power: 47 - 104 hp  
35 - 78 kW

## Specifications

Torque: 5,483 - 12,133 lb.-in.  
619 - 1,370 Nm.  
Ratios: 1.21:1, 1:1, 1:1.21, 1:1.46, 1:1.92  
Seals: Triple Lip Spring Loaded  
Bearings: Tapered Roller  
Oil Cap: 62 oz. (1.8 L)  
Weight: 98 lbs. (44.5 kg)

## Applications

Rotary Cutters Rotary Slashers



# RC-105 Series

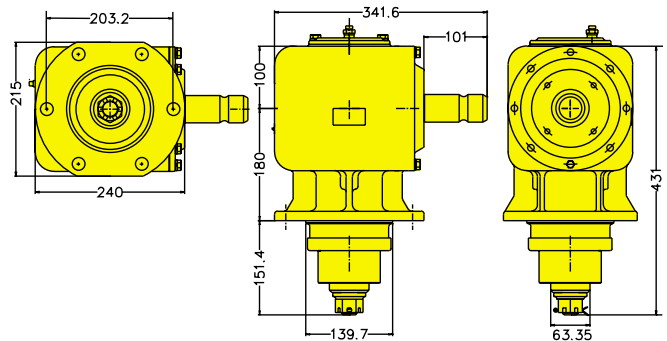
Power: 53 - 144 hp  
40 - 107 kW

## Specifications

Torque: 6,183 - 16,800 lb.-in.  
698 - 1,897 Nm.  
Ratios: 1.21:1, 1:1, 1:1.21, 1:1.46, 1:1.92  
Seals: Triple Lip Spring Loaded  
Bearings: Tapered Roller  
Oil Cap: 57 oz. (1.7 L)  
Weight: 96 lbs. (43.5 kg)

## Applications

Rotary Cutters Rotary Slashers



**Gears:** Available with either straight bevel or spiral bevel gearing.

**Power:** Hp & Torque based on AGMA formula for continuous duty plus a service or load class factor.

**Shafting:** Various dimensional, metallurgical, and heat-treat options available.

**Bearings:** Geardrives available with various bearing life options.

**Lubrication:** Drives available with various lubes depending on operating characteristics.

## RC-130S Series

Power: 61 - 171 hp  
45 - 128 kW

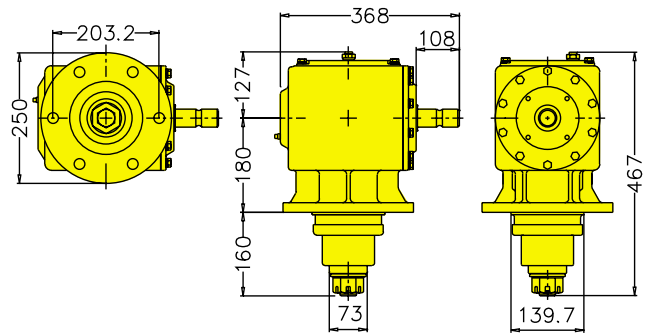
## Right Angle Drives

### Specifications

Torque:	7,117 - 19,950 lb.-in. 803 - 2,252 Nm.
Ratios:	1.21:1, 1:1, 1:1.21, 1:1.46, 1:1.92
Seals:	Triple Lip Spring Loaded
Bearings:	Tapered Roller
Oil Cap:	60 oz. (1.8 L)
Weight:	109 lbs. (49.4 kg)

### Applications

Rotary Cutters      Rotary Slashers



## RC-130L Series

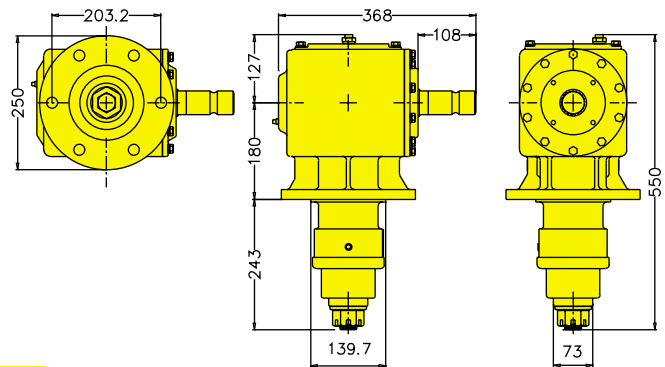
Power: 61 - 171 hp  
45 - 128 kW

### Specifications

Torque:	7,117 - 19,950 lb.-in. 803 - 2,252 Nm.
Ratios:	1.21:1, 1:1, 1:1.21, 1:1.46, 1:1.92
Seals:	Triple Lip Spring Loaded
Bearings:	Tapered Roller
Oil Cap:	65 oz. (1.9 L)
Weight:	120 lbs. (54.4 kg)

### Applications

Rotary Cutters      Rotary Slashers



## RC-150L Series

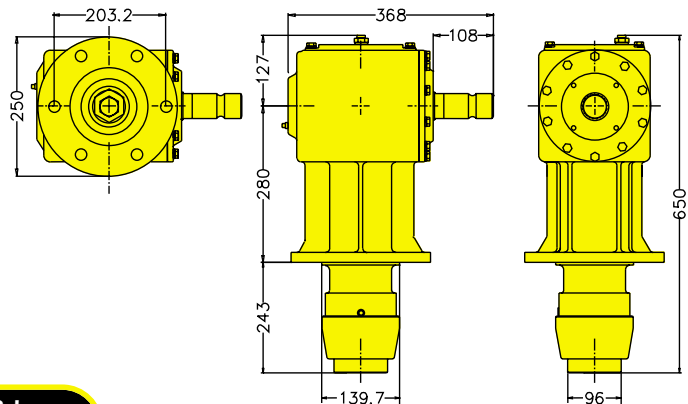
Power: 61 - 171 hp  
45 - 128 kW

### Specifications

Torque:	7,117 - 19,950 lb.-in. 803 - 2,252 Nm.
Ratios:	1.21:1, 1:1, 1:1.21, 1:1.46, 1:1.92
Seals:	Triple Lip Spring Loaded
Bearings:	Tapered Roller
Oil Cap:	85 oz. (2.5 L)
Weight:	145 lbs. (65.8 kg)

### Applications

Rotary Cutters      Rotary Slashers



## RC-200 Series

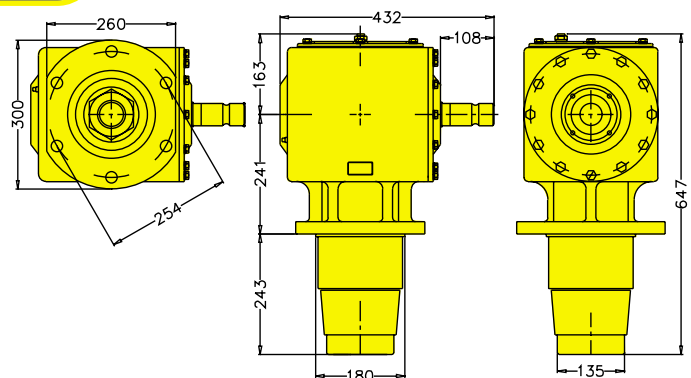
Power: 180 - 243 hp  
134 - 181 kW

### Specifications

Torque:	21,000 - 28,350 lb.-in. 2,371 - 3,201 Nm.
Ratios:	1.21:1, 1:1, 1:1.21, 1:1.46
Seals:	Triple Lip Spring Loaded
Bearings:	Tapered Roller
Oil Cap:	174 oz. (5.2 L)
Weight:	220 lbs. (99.8 kg)

### Applications

Rotary Cutters      Rotary Slashers



**Gears:** Available with either straight bevel or spiral bevel gearing.

**Power:** Hp & Torque based on AGMA formula for continuous duty plus a service or load class factor.

**Shafting:** Various dimensional, metallurgical, and heat-treat options available.

**Bearings:** Geardrives available with various bearing life options.

**Lubrication:** Drives available with various lubes depending on operating characteristics.

# RC-40T Series

Power: 16 - 23 hp  
12 - 17 kW

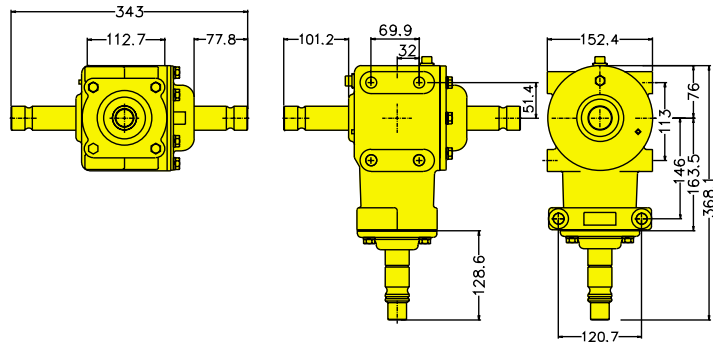
# Divider Drives

## Specifications

Torque: 1,867 - 2,683 lb.-in.  
211 - 303 Nm.  
Ratios: 1:1.07  
Seals: Triple Lip Spring Loaded  
Bearings: Deep Groove Ball  
Oil Cap: 23 oz. (.68 L)  
Weight: 45 lbs. (20.4 kg)

## Applications

Rotary Cutters Rotary Slashers



# RC-61T Series

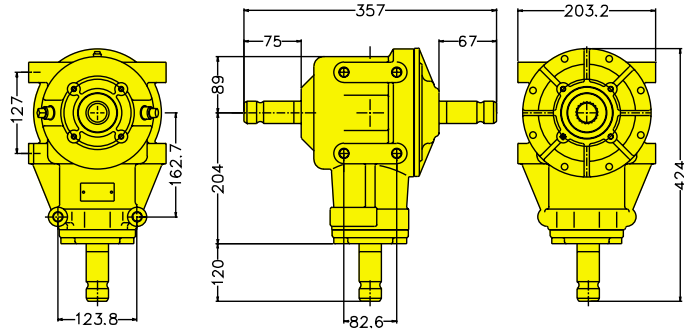
Power: 35 - 72 hp  
26 - 54 kW

## Specifications

Torque: 4,083 - 8,400 lb.-in.  
461 - 948 Nm.  
Ratios: 1.46:1, 1.21:1, 1:1, 1:1.21  
Seals: Triple Lip Spring Loaded  
Bearings: Tapered Roller  
Oil Cap: 46 oz. (1.4 L)  
Weight: 70 lbs. (31.8 kg)

## Applications

Rotary Cutters Rotary Slashers



# RCD-90 Series

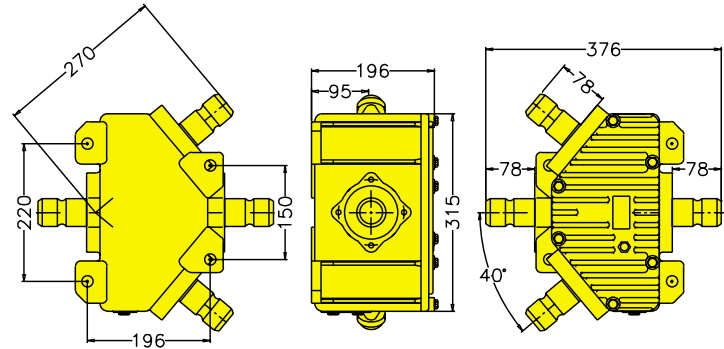
Power: 44 - 130 hp  
33 - 97 kW

## Specifications

Torque: 5,133 - 15,167 lb.-in.  
580 - 1,712 Nm.  
Ratios: 1.3:1, 1.2:1, 1:1, 1:1.15, 1:1.2  
Seals: Double Lip Spring Loaded  
Bearings: Deep Groove Ball  
Oil Cap: 60 oz. (1.8 L)  
Weight: 80 lbs. (36.3 kg)

## Applications

Rotary Cutters Rotary Slashers



# RC-91 Series

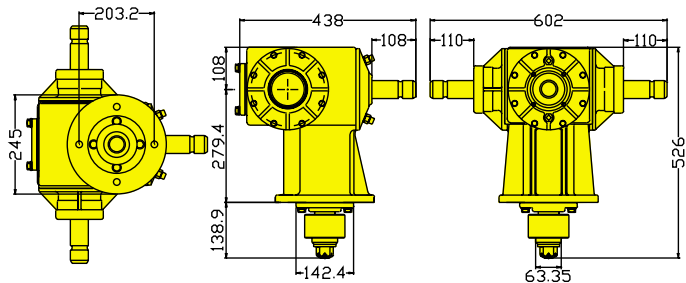
Power: 120 - 160 hp  
89 - 119 kW

## Specifications

Torque: 14,000 - 18,667 lb.-in.  
1,581 - 2,107 Nm.  
Ratios: 1.21:1, 1:1.46  
Seals: Triple Lip Spring Loaded  
Bearings: Tapered Roller  
Oil Cap: 92 oz. (2.7 L)  
Weight: 191 lbs. (86.6 kg)

## Applications

Rotary Cutters Rotary Slashers



**Gears:** Available with either straight bevel or spiral bevel gearing.

**Power:** Hp & Torque based on AGMA formula for continuous duty plus a service or load class factor.

**Shafting:** Various dimensional, metallurgical, and heat-treat options available.

**Bearings:** Geardrives available with various bearing life options.

**Lubrication:** Drives available with various lubes depending on operating characteristics.

# RCD-101 Series

Power: 92 - 227 hp  
69 - 169 kW

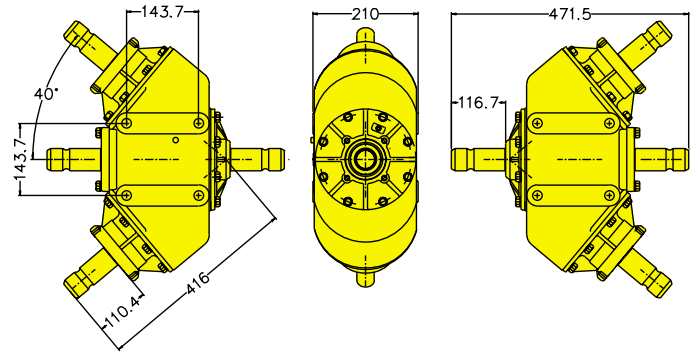
# Divider Drives

## Specifications

Torque: 10,733 - 26,483 lb.-in.  
1,212 - 2,990 Nm.  
Ratios: 1.3:1, 1:1, 1:1.15, 1:1.2  
Seals: Triple Lip Spring Loaded  
Bearings: Tapered Roller  
Oil Cap: 83 oz. (2.5 L)  
Weight: 131 lbs. (59.4 kg)

## Applications

Rotary Cutters Rotary Slashers



# RC-110 Series

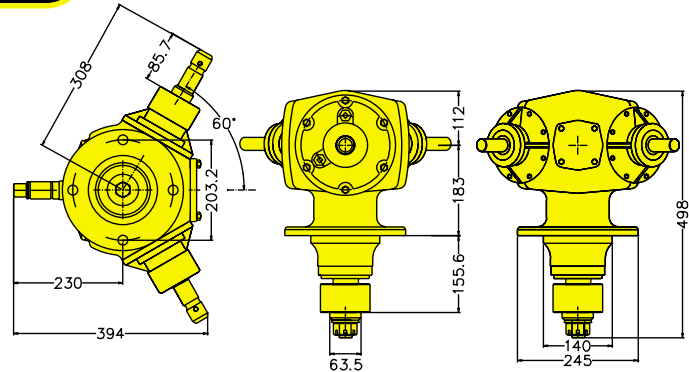
Power: 120 - 160 hp  
89 - 119 kW

## Specifications

Torque: 14,000 - 18,667 lb.-in.  
1,581 - 2,107 Nm.  
Ratios: 1.2:1, 1:1.46  
Seals: Triple Lip Spring Loaded  
Bearings: Tapered Roller  
Oil Cap: 52 oz. (1.5 L)  
Weight: 140 lbs. (63.5 kg)

## Applications

Rotary Cutters Rotary Slashers



# RC-130T Series

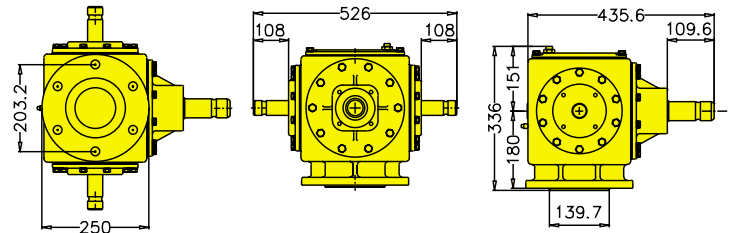
Power: 153 - 262 hp  
114 - 195 kW

## Specifications

Torque: 17,850 - 30,567 lb.-in.  
2,015 - 3,451 Nm.  
Ratios: 1.188:1, 1:1, 1:1.88, 1:1.93  
Seals: Triple Lip Spring Loaded  
Bearings: Tapered Roller  
Oil Cap: 168 oz. (4.9 L)  
Weight: 125 lbs. (56.7 kg)

## Applications

Rotary Cutters Rotary Slashers



# RC-130TL Series

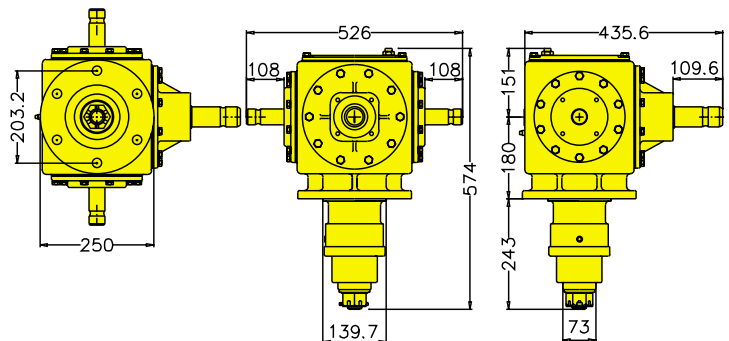
Power: 153 - 262 hp  
114 - 195 kW

## Specifications

Torque: 17,850 - 30,567 lb.-in.  
2,015 - 3,451 Nm.  
Ratios: 1.188:1, 1:1.93  
Seals: Triple Lip Spring Loaded  
Bearings: Tapered Roller  
Oil Cap: 184 oz. (5.4 L)  
Weight: 176 lbs. (79.8 kg)

## Applications

Rotary Cutters Rotary Slashers



**Gears:** Available with either straight bevel or spiral bevel gearing.

**Power:** Hp & Torque based on AGMA formula for continuous duty plus a service or load class factor.

**Shafting:** Various dimensional, metallurgical, and heat-treat options available.

**Bearings:** Geardrives available with various bearing life options.

**Lubrication:** Drives available with various lubes depending on operating characteristics.

# RC-130TLO Series

Power: 153 - 262 hp  
114 - 195 kW

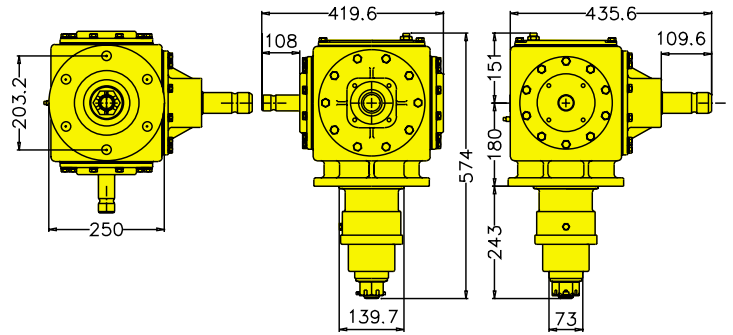
# Divider Drives

## Specifications

Torque: 17,850 - 30,567 lb.-in.  
2,015 - 3,451 Nm.  
Ratios: 1.188:1, 1:1.93  
Seals: Triple Lip Spring Loaded  
Bearings: Tapered Roller  
Oil Cap: 184 oz. (5.4 L)  
Weight: 173 lbs. (78.5 kg)

## Applications

Rotary Cutters Rotary Slashers



# RC-130TS Series

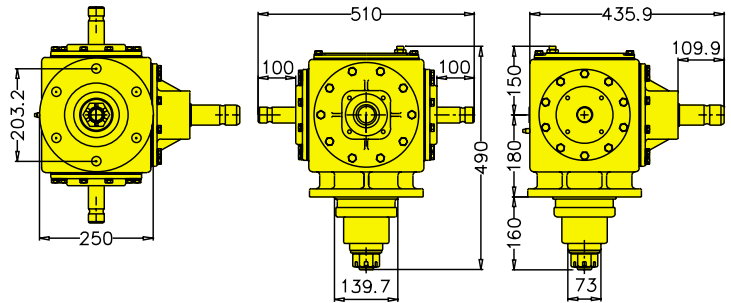
Power: 133 - 262 hp  
99 - 195 kW

## Specifications

Torque: 15,517 - 30,567 lb.-in.  
1,752 - 3,451 Nm.  
Ratios: 1.188:1, 1:1.93, 1:2.25  
Seals: Triple Lip Spring Loaded  
Bearings: Tapered Roller  
Oil Cap: 179 oz. (5.3 L)  
Weight: 165 lbs. (74.8 kg)

## Applications

Rotary Cutters Rotary Slashers



# RC-130TSO Series

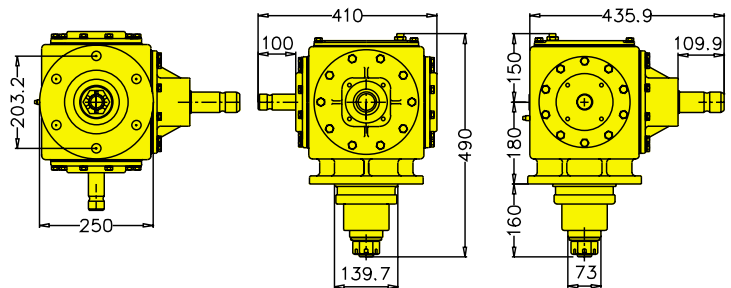
Power: 133 - 262 hp  
99 - 195 kW

## Specifications

Torque: 15,517 - 30,567 lb.-in.  
1,752 - 3,451 Nm.  
Ratios: 1.188:1, 1:1.93, 1:2.25  
Seals: Triple Lip Spring Loaded  
Bearings: Tapered Roller / Deep Groove Ball  
Oil Cap: 179 oz. (5.3 L)  
Weight: 162 lbs. (73.5 kg)

## Applications

Rotary Cutters Rotary Slashers



# MD-20

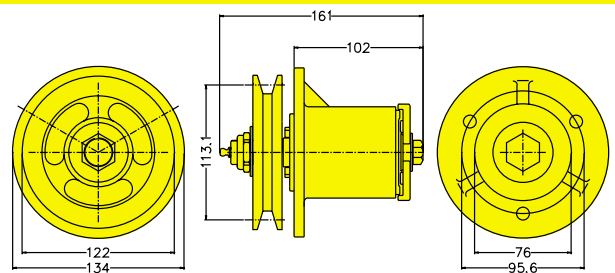
## Specifications

Seals: Single Lip  
Bearings: Tapered Roller / Deep Groove Ball  
Grease Cap: 6 oz. (.18 L)  
Weight: 9 lbs. (4.1 kg)

## Applications

Finishing Mowers  
Toppers

# Spindle Assemblies



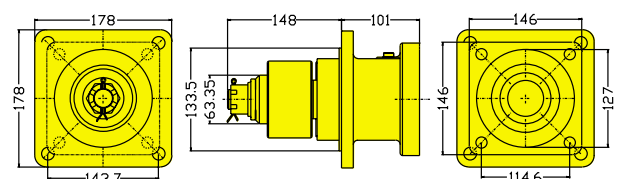
# MDH-40

## Specifications

Seals: Double Lip Spring Loaded  
Bearings: Tapered Roller  
Oil Cap: 8 oz. (.24 L)  
Weight: 30 lbs. (13.6 kg)

## Applications

Hydraulic Mowers



# Shaft Options

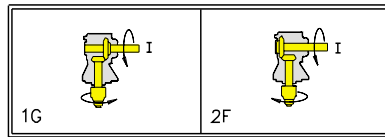
Various dimensional, metallurgical and heat treat options available.

# Shaft Chart

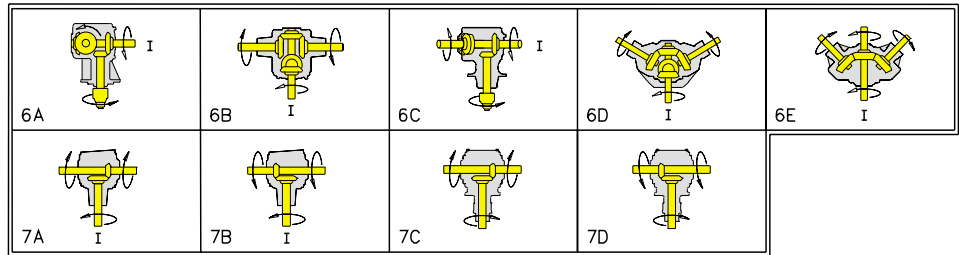
Ø1-3/8" SHEAR BOLT	Ø1-3/4" - 20	Ø1-1/4" w\1/4" KEYWAY	Ø2-3/8", DP8/16-18T	Ø3", DP8/16-23T
Ø1-3/8" - 6B	Ø1-3/8" - 6A	Ø1-3/8" - 21	Ø1-5/8", DP8/16-12T	Ø2", DP8/16-15T

# Configuration Options

Right Angle Drives



Divider Drives



# Configuration Chart

# Warranty

Omni Gear's Enclosed Geardrives are warranted to be free of defects in material or workmanship and to meet Omni Gear's specifications at the time of sale. For a copy of our warranty please contact Omni Gear.

# Product Information

The data presented in this catalog is for general information and preliminary layout purposes only. Omni Gear, through its policy of continuous improvement, reserves the right to change specifications without notice. For specific application and dimensional information, please contact Omni Gear.

The horsepower and torque ranges given here are generalizations. Different conditions for various applications may result in a higher or lower power requirement. For these reasons, the ratings contained herein cannot be guaranteed for any application. Contact Omni Gear for ratings on specific applications. Prototype testing should be conducted for each application before production.



7502 Mesa Road □ Houston, Texas 77028  
 Phone: 713-635-6331 □ Fax: 713-635-6360  
 E-mail: Sales@OmniGear.com □ Web: www.OmniGear.com