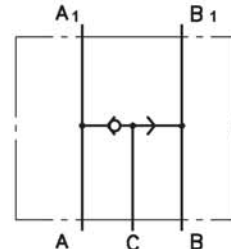


## Manifold Mounted Brake Release Shuttle Valve - KPW Series



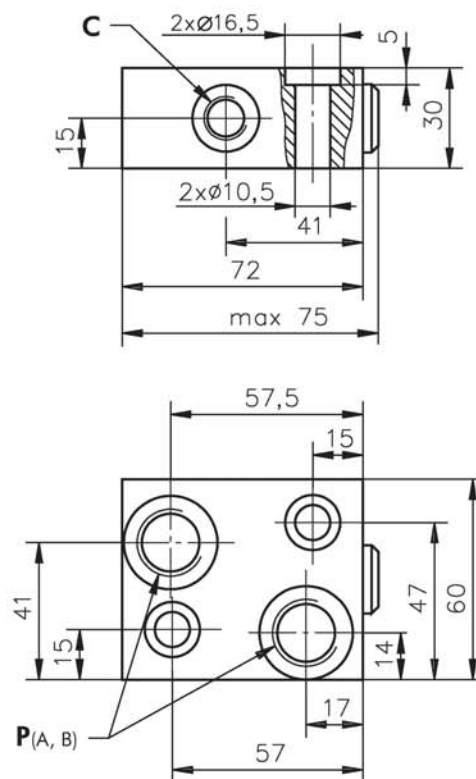
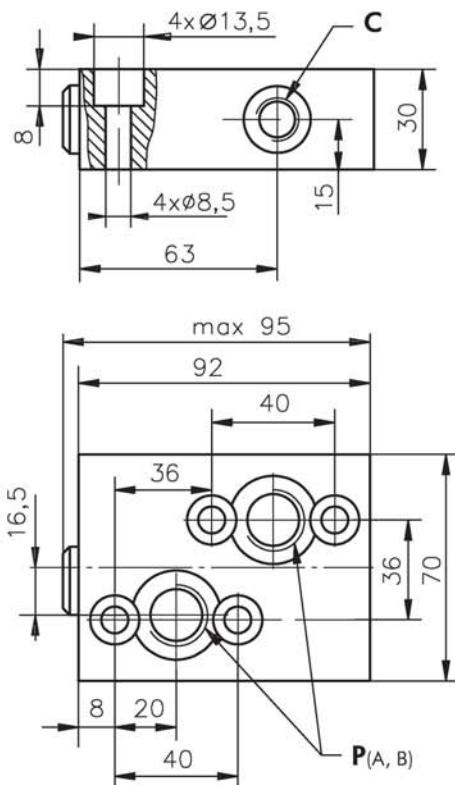
### SPECIFICATION DATA

Parameters	Type	
	KPWR	KPWS
Flow Rate , l/min	60	
Rated Pressure , bar	250	
Weight , kg	0,850	0,670



VALVE FOR EPM, EPRM HYDRAULIC MOTORS  
KPWR-250

VALVE FOR EPMS HYDRAULIC MOTORS  
KPWS-250



P(A, B): G1/2 (M22x1,5), 17 mm depth  
C : G1/4 (M14x1,5), 14 mm depth

**Note :** KPWR Blocks are installed directly on EPM and EPRM Motors with four bolts M8x40 - 8.8 DIN 912. Tightening torque  $2^{+0.5}$  daNm.  
KPWS Blocks are installed directly on EPMS Motors with two bolts M10x40 - 8.8 DIN 912. Tightening torque  $4,5^{+0.5}$  daNm.