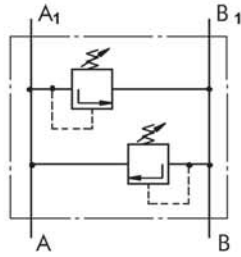
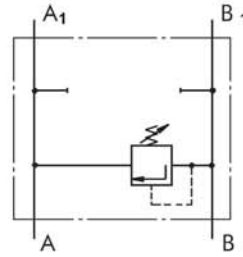


KPD Series Manifold Mounted Cross Line Relief Valves



Dual Crossover
Relief Valve



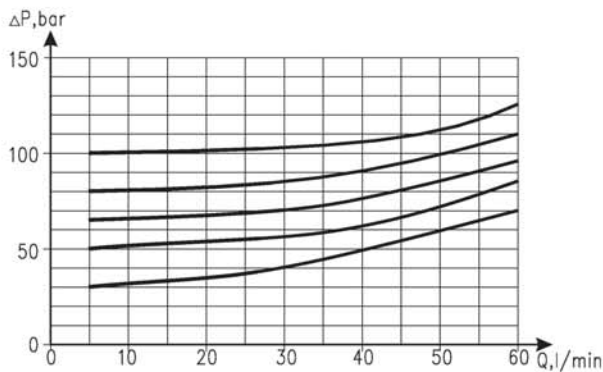
Single Crossover
Relief Valve



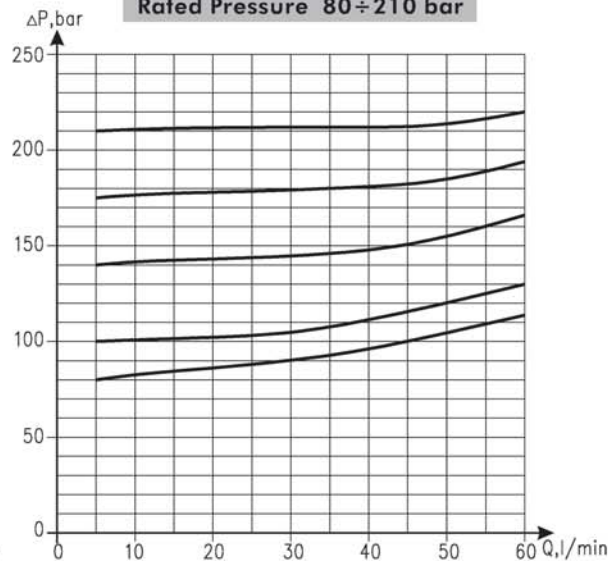
SPECIFICATION DATA

Parameters	Type					
	KPER(H)	KPES(H)	KPDR(H)	KPDS(H)	KPET	KPDT
Flow Rate , l/min	60				120	
Rated Pressure , bar	30 to 100; 80 to 210				80 to 210	
Weight , kg	1,32	1,58	1,44	1,70	5,10	5,54

Rated Pressure 30 ÷ 100 bar



Rated Pressure 80 ÷ 210 bar



Manifold Mounted Cross Line Relief Valve - KPDR Series 3

Albroco introduces the KPDR series 3 cross line relief valve
Designed to manifold mount directly onto the ports of the EPM & EPRM motor
The valve housing is manufactured from steel & is pressure rated to 300 bar

SPECIFICATION DATA

Parameters	Type
	KPDR...-series 3
Flow Rate , l/min	60
Rated Pressure*, bar	30÷100; 50÷210; 80÷300
Weight , kg	1,52

*Pressure Settings are at flow rate of 5 l/min
and viscosity 35 mm²/s (50 °C).

Constructional changes for KPDR:

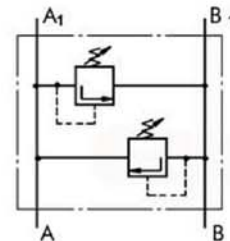
1. The overall dimension was 36mm, now 35mm
2. The overall dimension was 92mm, now 99mm

All other features remain unchanged

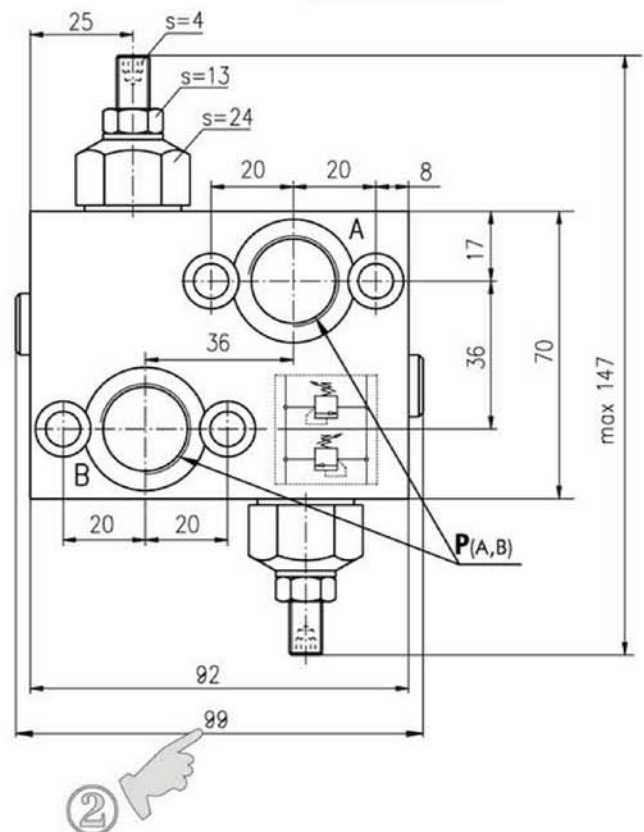
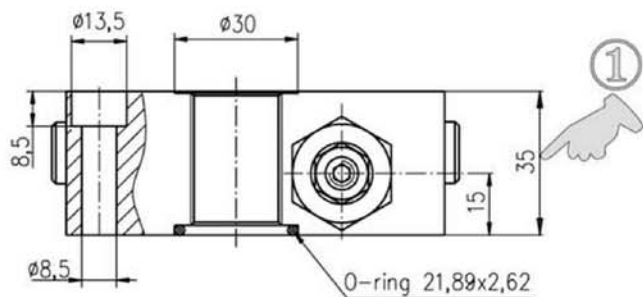
Note:

KPDR blocks are installed directly onto
Albroco EPM & EPRM motors using
4 off M8x40 bolts (grade 8.8 - DIN 912)
Tightening torque req'd: 20 -25 Nm

code	Thread Ports - P _(A,B)
-	G1/2 17 mm deep
M	M22x1,5 17 mm deep
A	7/8 - 14 UNF O-ring, 17 mm deep

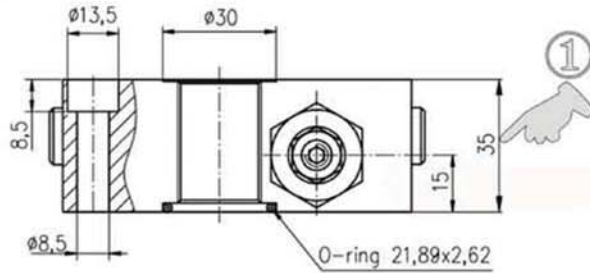


Dual Crossover
Relief Valve



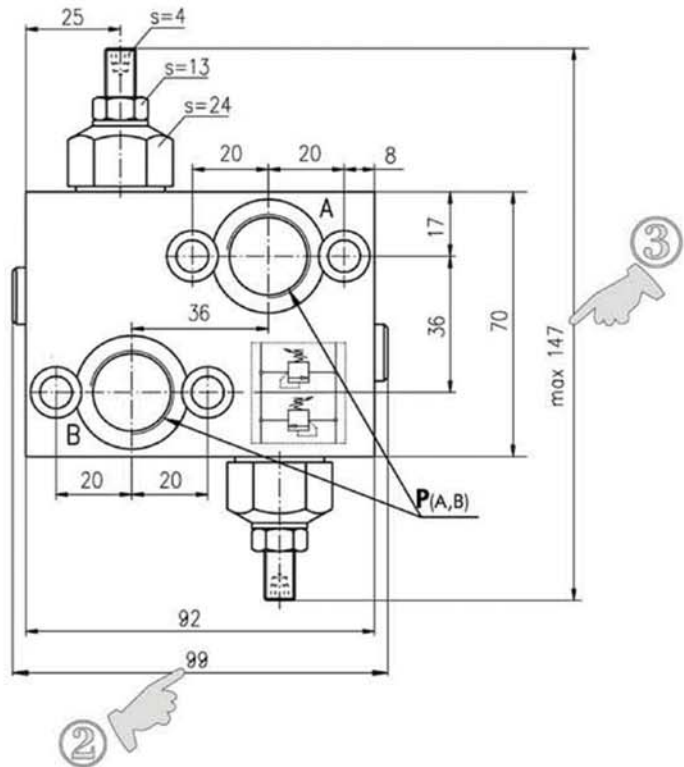
Constructional changes from KPDRH to KPDR:

1. The overall dimension was 40mm, now 35mm
2. The overall dimension was 92mm, now 99mm
3. The overall dimension was 134mm for series 1 & 131mm for series 2, now 147mm



Note:

KPDR blocks are installed directly onto Albroco EPM & EPRM motors using 4 off M8x40 bolts (grade 8.8 - DIN 912) Tightening torque req'd: 20 -25 Nm



	1	2	3	4
KPDR	/		/	
Pos. 1 - Max. pressure range, bar				
100	- 30÷100, Std Setting 100 bar@5 lpm			
210	- 50÷210, Std Setting 210 bar@5 lpm			
250	- 80÷300, Std Setting 250 bar@5 lpm			
Pos. 2 - Ports				
omit	- G1/2, BSPP (ISO 228)			
M	- M22x1,5, Metric (ISO 262)			
A	- 7/8-14 UNF, O-ring			
Pos. 3 - Option (Paint)*				
omit	- Ferrozinc			
P	- Painted			
PC	- Corrosion Protected Paint			
Pos. 4 - Design Series				
3	- series 3			

* The color is by customer's request.

code	Thread Ports - P _(A,B)
-	G1/2 17 mm deep
M	M22x1,5 17 mm deep
A	7/8 - 14 UNF O-ring, 17 mm deep

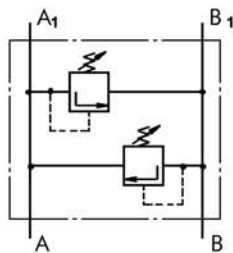
Manifold Mounted Cross Line Relief Valve - KPDS series 3

Albroco introduces the KPDS series 3 cross line relief valve
Designed to manifold mount directly onto the ports of the EPMS motor
The valve housing is manufactured from steel & is pressure rated to 300 bar

SPECIFICATION DATA

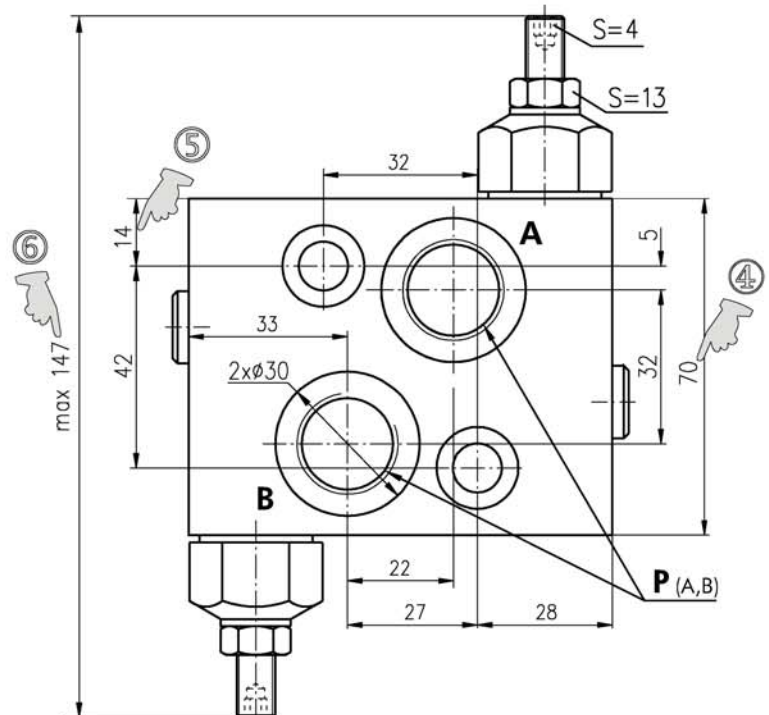
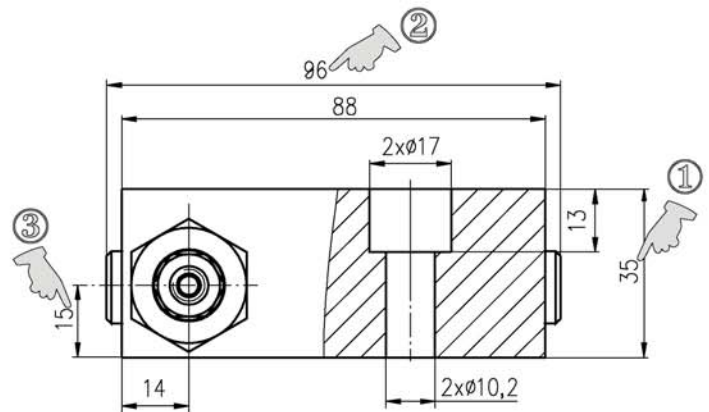
Parameters	Type
	KPDS...-series 3
Flow Rate , l/min	60
Rated Pressure*, bar	30 ÷ 100; 50 ÷ 210; 80 ÷ 300
Weight , kg	1,5

*Pressure Settings are at flow rate of 5 l/min and viscosity 32 mm²/s (50 °C).



Dual Crossover
Relief Valve

code	Thread Ports - P _(A,B)
-	G1/2 17 mm deep
M	M22x1,5 17 mm deep
A	7/8 - 14 UNF O-ring, 17 mm deep



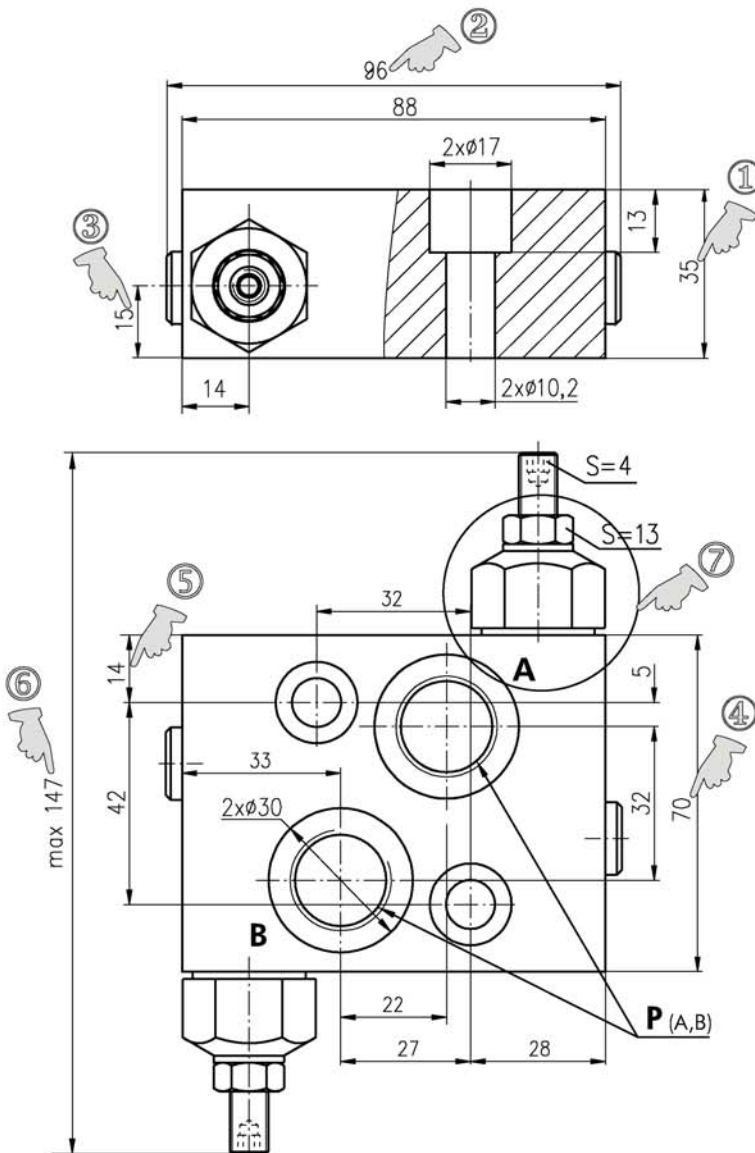
Constructional changes for KPDS:

1. The overall dimension was 40 mm, now is 35 mm.
2. The overall dimension was 88 mm, now is 96 mm.
3. The dimension was 17 mm, now is 15 mm.
4. The dimension was 76 mm, now is 70 mm.
5. The dimension was 15 mm, now is 14 mm.
6. The overall dimension was 153 mm, now is 147 mm.

Note:

KPDS blocks are installed directly onto Albroco EPMS motors using 2 off M8x35 bolts (grade 8.8 - DIN 912)
Tightening torque req'd: 40 - 50 Nm

All other overall and fixing parameters of new series are the same as the parameters of previous one.



KPDS	1	2	3	4
	/		/	

Pos. 1 - Max. pressure range, bar

100	- 30÷100, Std Setting 100 bar@5 lpm
210	- 50÷210, Std Setting 210 bar@5 lpm
250	- 80÷300, Std Setting 250 bar@5 lpm

Pos. 2 - Ports

omit	- G1/2, BSPP (ISO 228)
M	- M22x1,5, Metric (ISO 262)
A	- 7/8-14 UNF, O-ring

Pos. 3 - Option (Paint)*

omit	- Ferrozinc
P	- Painted
PC	- Corrosion Protected Paint

Pos. 4 - Design Series

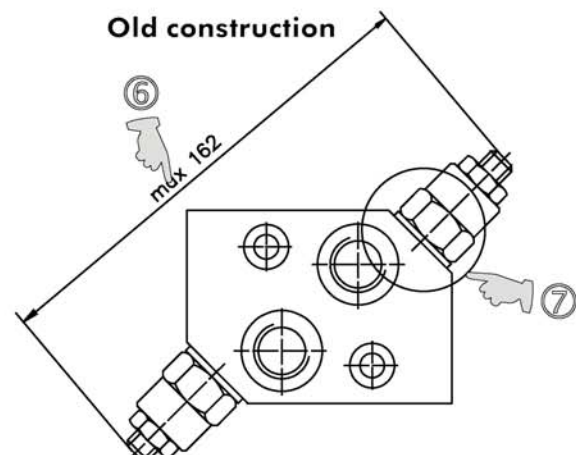
3	- series 3
---	------------

* The color is by customer's request.

code	Thread Ports - P _(A,B)
-	G1/2 17 mm deep
M	M22x1,5 17 mm deep
A	7/8 - 14 UNF O-ring, 17 mm deep

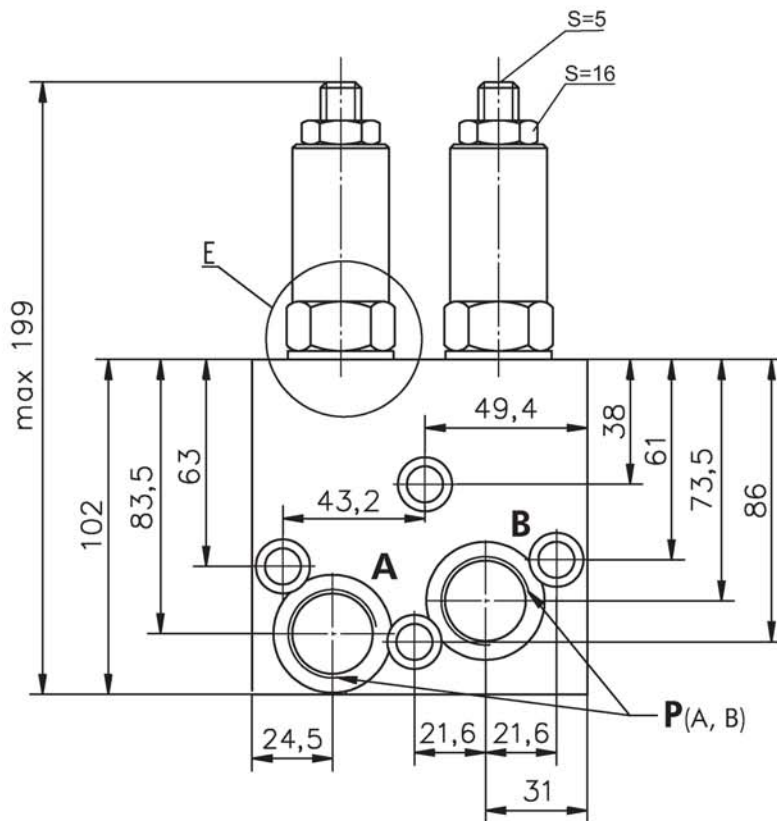
Constructional changes for KPDSH:

1. The overall dimension was 40 mm, now is 35 mm.
2. The overall dimension was 88 mm, now is 96 mm.
3. The dimension was 17 mm, now is 15 mm.
4. The dimension was 76 mm, now is 70 mm.
5. The dimension was 15 mm, now is 14 mm.
6. The overall dimension was 162 mm, now is 147 mm.
7. New positions of valves.

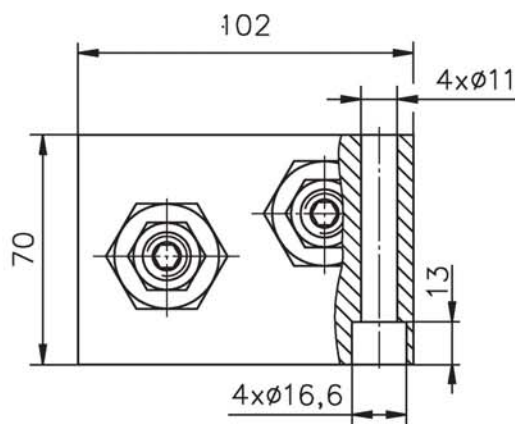
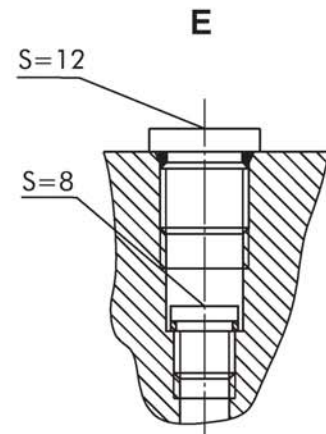


Manifold Mounted Cross Line Relief Valve - KPDT Series

DUAL VALVE KPDT .../...



SINGLE VALVE KPET .../...



Ports A & B: 3/4" BSP (M27x2) - 20mm deep

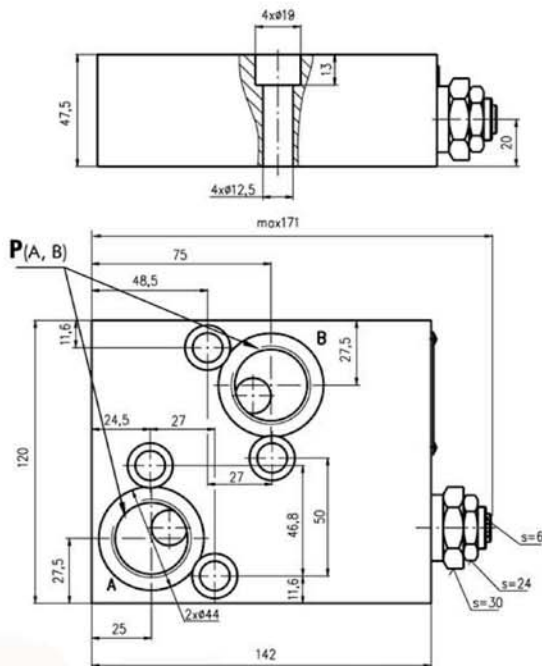
Note:

KPDT blocks are installed directly onto Albroco EPMT motors using 4 off M10x70 bolts - grade 8.8 DIN 912

Tightening torque req'd: 40-50 Nm

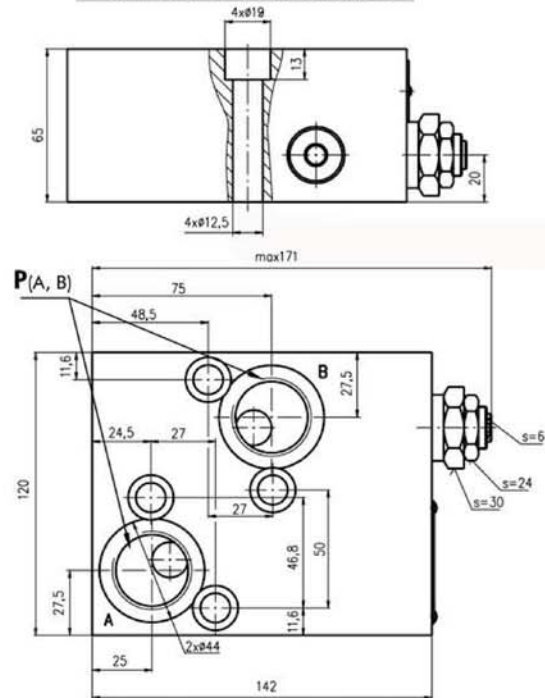
Manifold Mounted Cross Line Relief Valve - KPDV

SINGLE VALVE KPEAV .../...



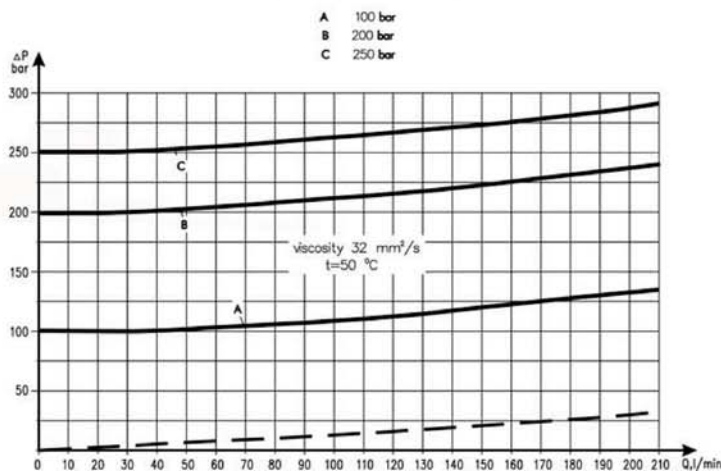
P_(A, B) : G1-A (M33x2), 20 mm depth

SINGLE VALVE KPEBV .../...



P_(A, B) : G1-A (M33x2), 20 mm depth

Rated Pressure



Ports A & B: 1" BSP (M33x2) - 20mm deep

Note:

KPEAV & KPEBV blocks are installed directly onto Albroco EPMV motors using 4 off M12x65 bolts - grade 8.8 DIN 912
Tightening torque req'd: 70-80 Nm

Ordering Codes for KPD Series Cross Line Relief Valves

	1	2	3	4	5	6	7
K P					/		/

Pos.1 - Number of Valves

- D** - Two Valves - Dual
- EA** - One Valve on line A - Single
- EB** - One Valve on line B - Single

Pos.2 - Housing Type

- R** - Valve block for EPM & EPRM
- S** - Valve block for EPMS
- T** - Valve block for EPMT
- V** - Valve block for EPMV

Pos.3 - Housing Design code

- omit - Model 1
- H*** - Model 2

NOTES:

- * Useful for types **R** and **S** only .
 - ** Useful for types **T** only .
 - *** The color is by customer's request.
- The Valve Blocks are mangano-phosphatized as standard.

Pos. 4 - Max. pressure range, bar

- 40** - 5 ÷ 40, Std Setting 40 bar@5 lpm
- 100** - 30 ÷ 100, Std Setting 100 bar@5 lpm
- 250** - 80 ÷ 250, Std Setting 250 bar@5 lpm
- 210**** - 80 ÷ 210, Std Setting 210 bar@5 lpm

Pos.5 - Ports

- omit - BSPP (ISO 228)
- M** - Metric (ISO 262)

Pos.6 - Option (Paint)***

- omit - no Paint
- P** - Painted
- PC** - Corrosion Protected Paint

Pos.7 - Design Series

Please see pages 2 - 5 for changes to
KPDR & KPDS style cross line relief valves