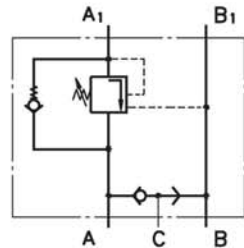
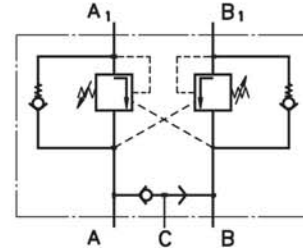


Manifold Mounted Overcentre Valves with Integral Brake Release Shuttle



Single Overcenter Valves
with Brake Control



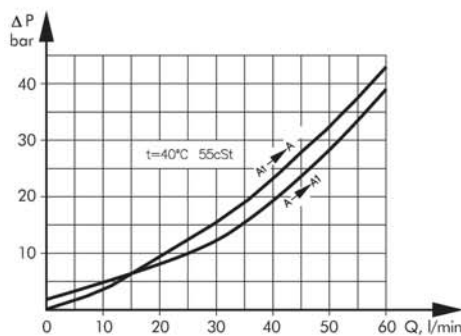
Dual Overcenter Valves
with Brake Control

SPECIFICATION DATA

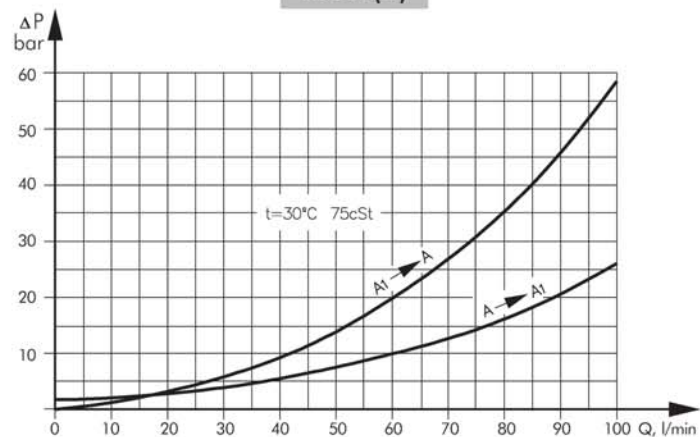
Parameters	Type					
	KPBR...E	KPBS...E	KPBR...D	KPBS...D	KPBT...E	KPBT...D
Flow Rate , l/min	60				100	
Rated Pressure , bar	250				250	
Pilot Ratio	4,25:1				4,25:1	
Weight , kg	3,300	3,340	3,350	3,390	5,400	5,800

PRESSURE LOSSES

KPBRE(D) and KPBSE(D)

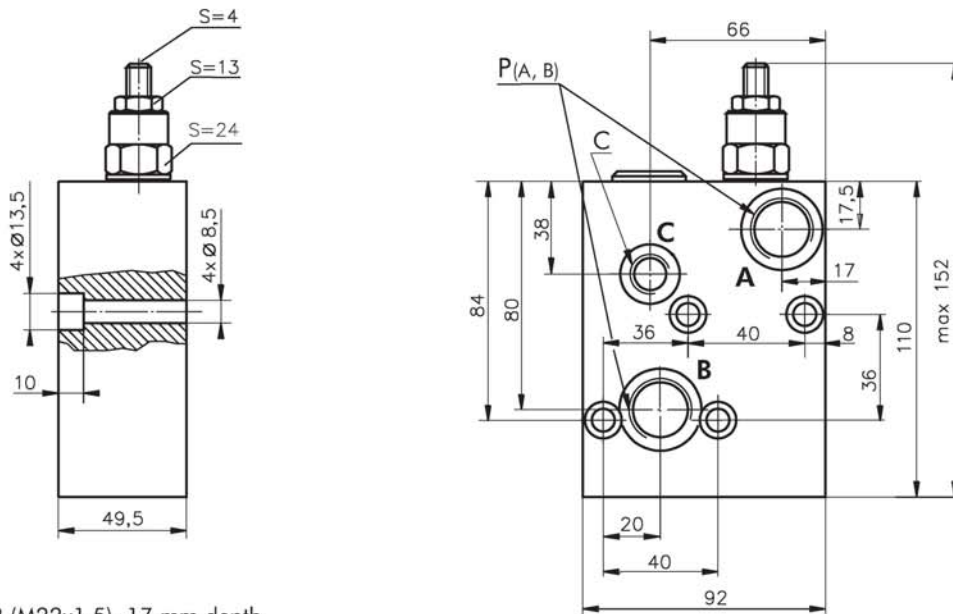


KPBTE(D)



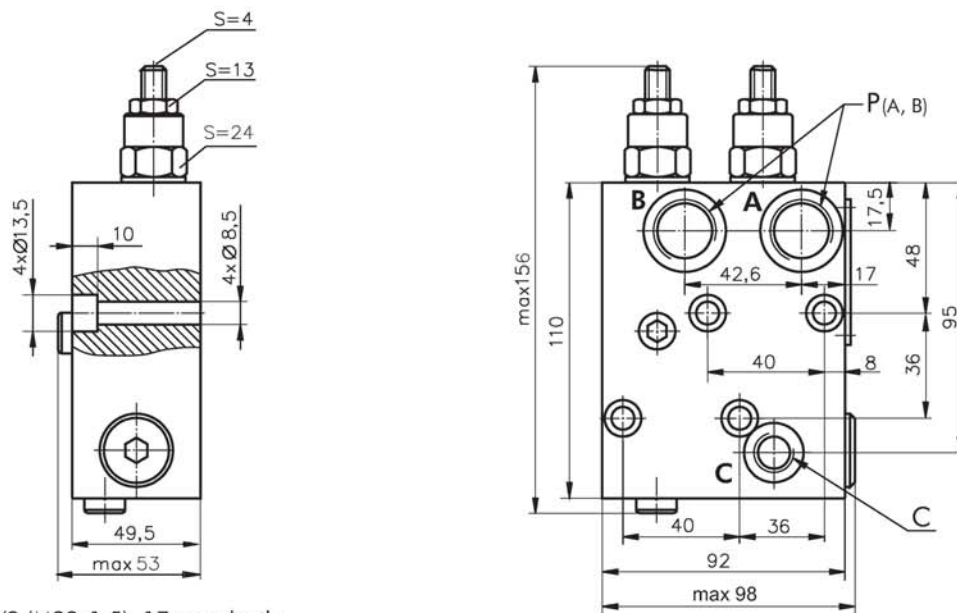
Manifold Mounted Overcentre Valve for EPM & EPRM Series Motors

SINGLE VALVE KPBR-250/1/E.. - Series 2



P(A, B) : G1/2 (M22x1,5), 17 mm depth
C : G1/4 (M14x1,5), 14 mm depth

DUAL VALVE KPBR-250/1/D... - Series 2

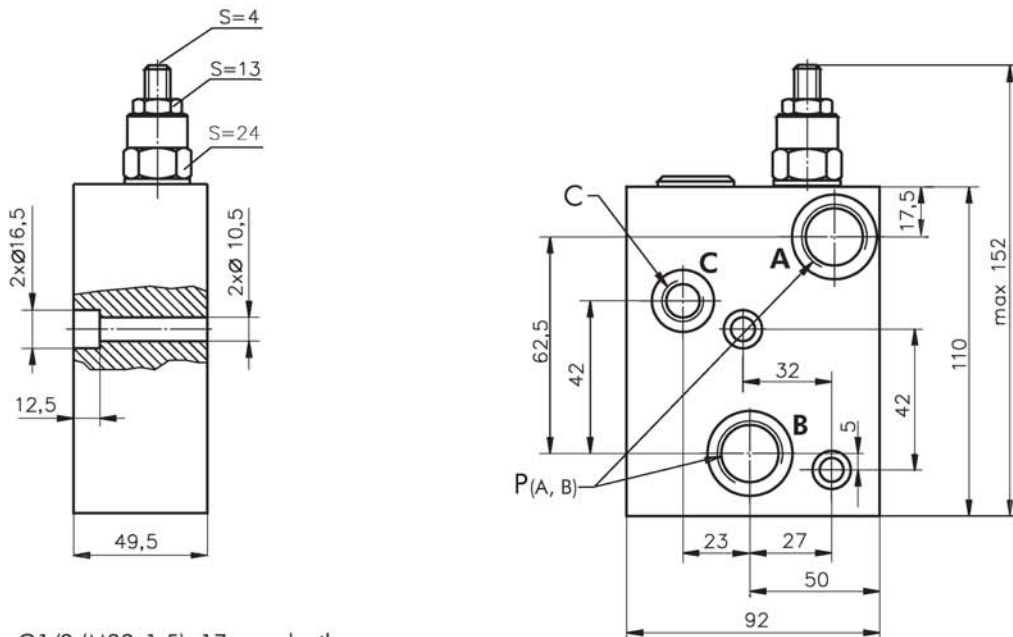


P(A, B) : G1/2 (M22x1,5), 17 mm depth
C : G1/4 (M14x1,5), 14 mm depth

Note : KPBR Blocks are installed directly on EPM and EPRM Motors with four bolts M8x50 - 8.8 DIN 912.
Tightening torque $2^{+0.5}$ daNm.

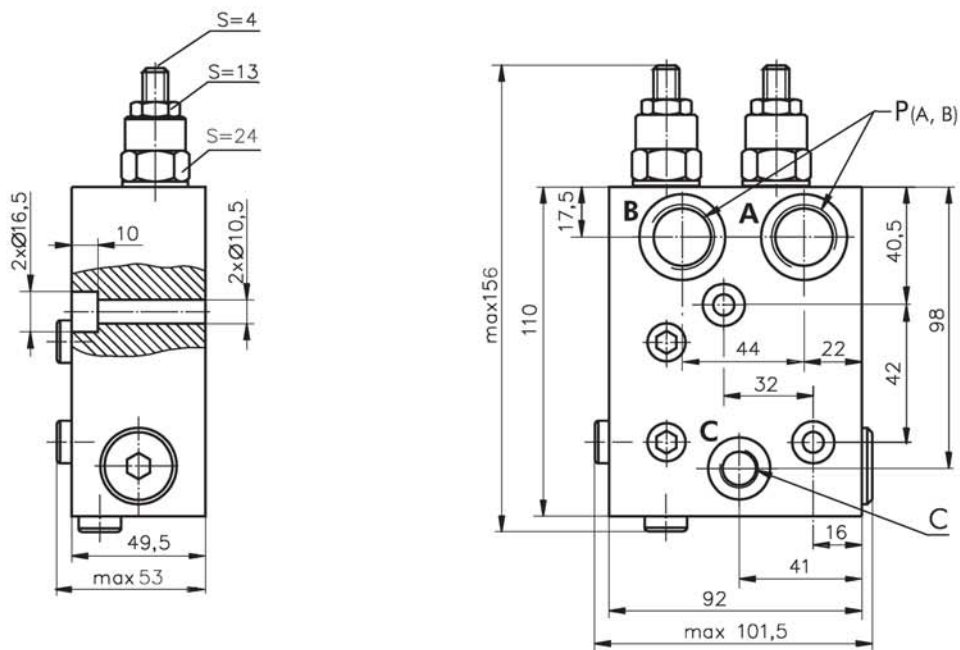
Manifold Mounted Overcentre Valve for EPMS Series Motors

SINGLE VALVE KPBS-250/1/E... - Series 2



P_(A, B) : G1/2 (M22x1,5), 17 mm depth
C : G1/4 (M14x1,5), 14 mm depth

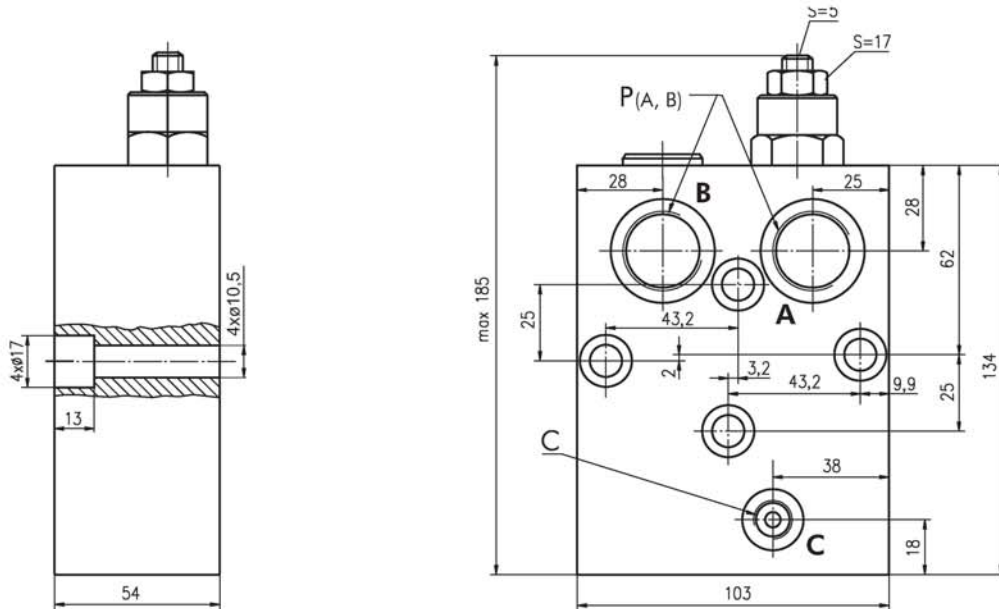
DUAL VALVE KPBS-250/1/D... - Series 2



P_(A, B) : G1/2 (M22x1,5), 17 mm depth
C : G1/4 (M14x1,5), 14 mm depth

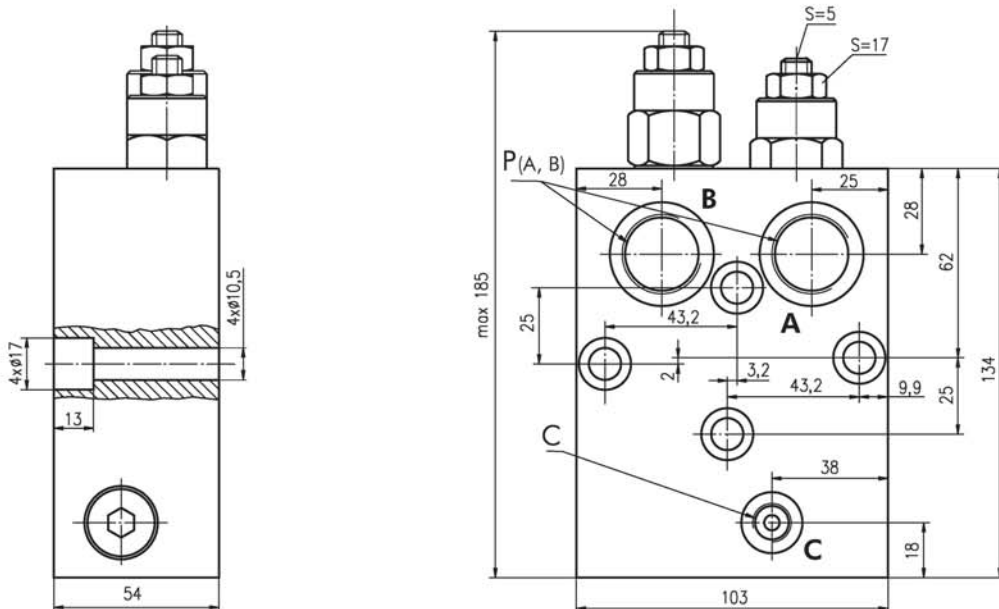
Note : KPBS Blocks are installed directly on EPMS Motors with two bolts M10x50 - 8.8 DIN 912.
Tightening torque 4,5^{+0.9} daNm.

Manifold Mounted Overcentre Valve for EPMT Series Motors



$P_{(A, B)}$: G3/4 (M27x2), 17 mm depth
 C : G1/4 (M14x1,5), 14 mm depth

DUAL VALVE KPBT-250/1/D...



$P_{(A, B)}$: G3/4 (M27x2), 17 mm depth
 C : G1/4 (M14x1,5), 14 mm depth

Note :KPBT Blocks are installed directly on EPMT Motors with four bolts M10x55 - 8.8 DIN 912.
Tightening torque $4,5^{+0,5}$ daNm.

Ordering Codes for KPB Series Overcentre Valves with Integral Brake Release Shuttle Valve

	1	2		3		4		5	6	7	8
KP			-		/		/				

Pos.1 - Valve Type

B - with overcenter valve (s)

Pos.2 - Housing Type

R - Valve block for EPM and EPRM Motors

S - Valve block for EPMS Motors

T* - Valve block for EPMT Motors

Pos.3 - Rated Pressure, bar

250

Pos.4 - Pilot Ratio*

1 -4,25 : 1

NOTES:

* Useful for overcenter valve type **B** only .

** The color is by customer's request.

Pos.5 - Number of Valves*

D -Two Valves

E -One Valve

Pos.6 - Ports

omit - BSPP (ISO 228)

M - Metric (ISO 262)

Pos.7 - Option (Paint)**

omit - no Paint

P - Painted

PC - Corrosion Protected Paint

Pos.8 - Design Series

omit - Factory specified