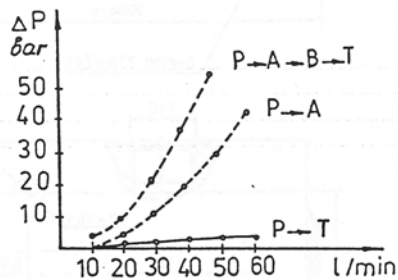
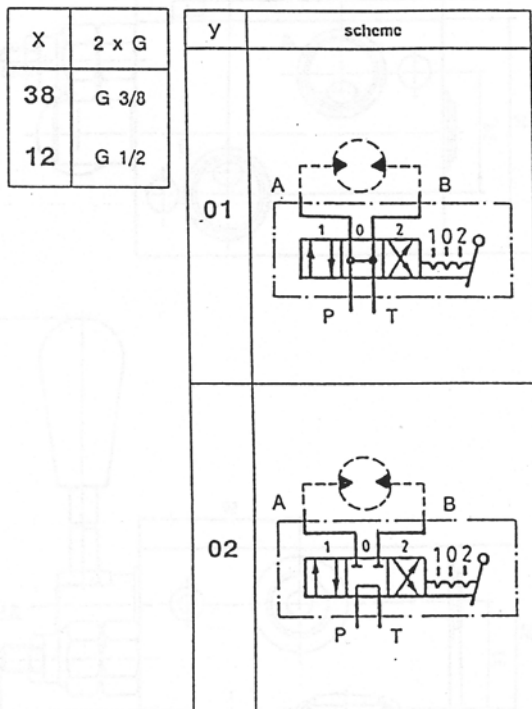


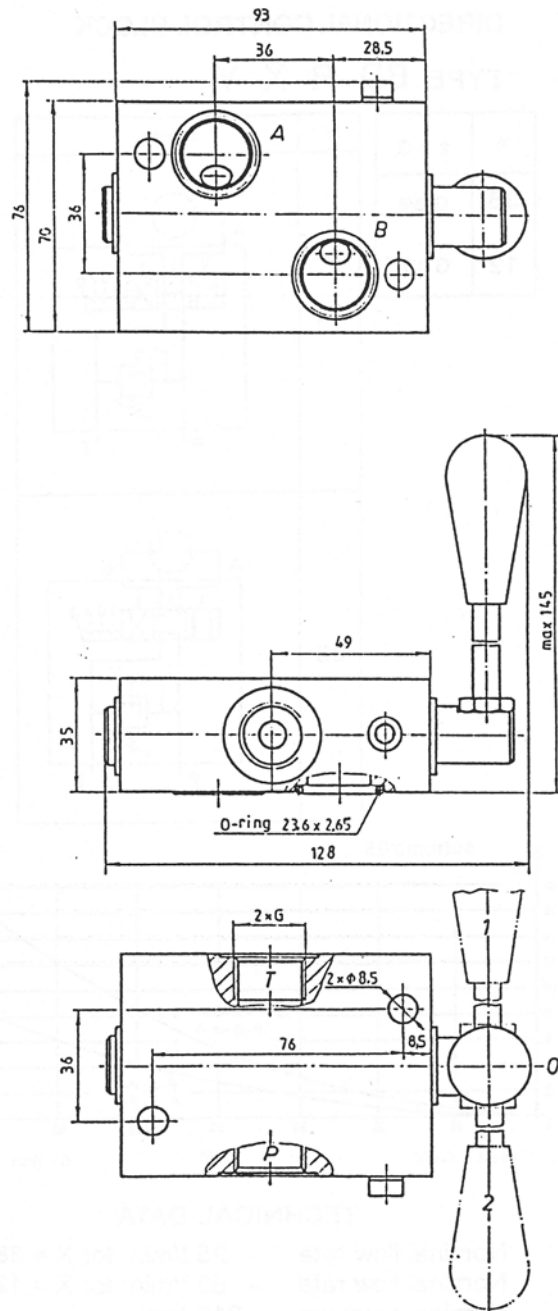
## BDR Type Motor Mounted Directional Control Valve

### Type BDR-X-Y



#### TECHNICAL DATA

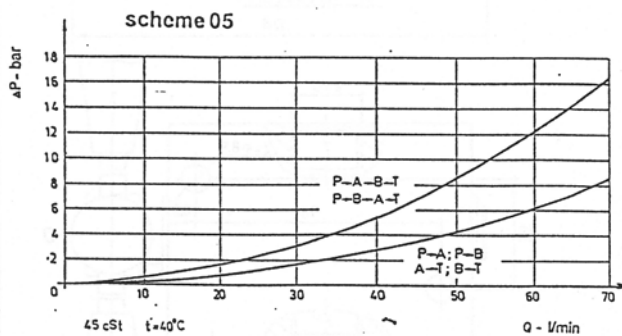
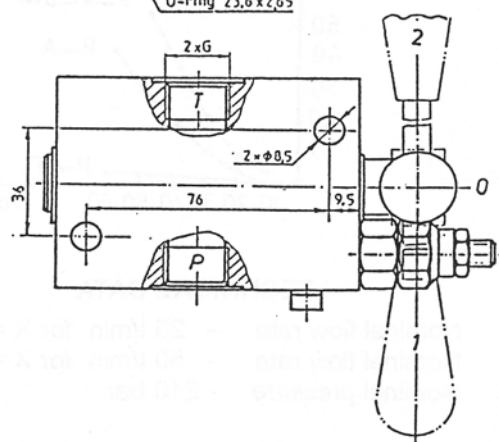
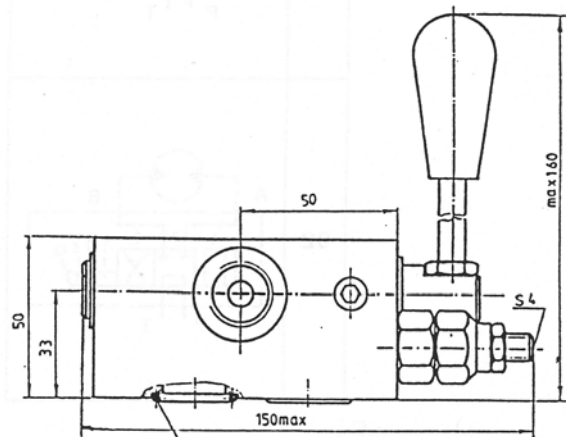
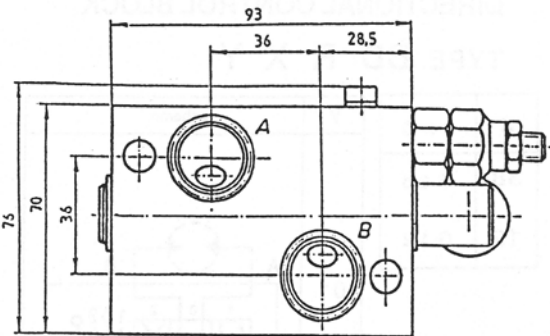
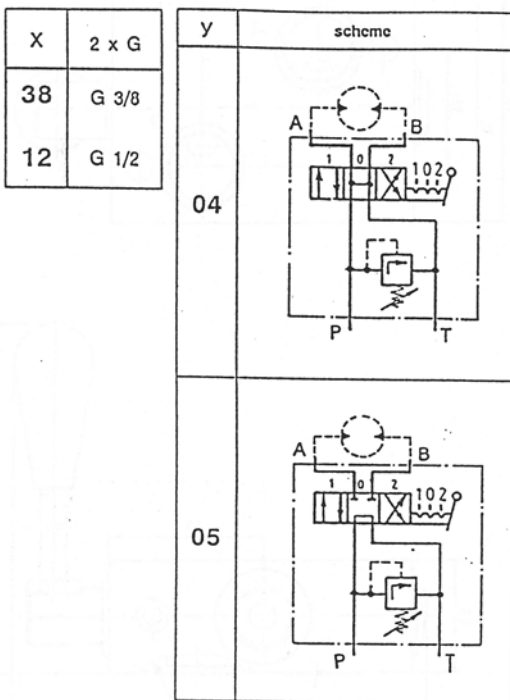
- Nominal flow rate - 25 l/min for X = 38
- Nominal flow rate - 50 l/min for X = 12
- Nominal pressure - 210 bar



*Manifold Mounts Directly onto ports of EPM & EPRM (OMP & OMR) motor*

**BDR Type Motor Mounted  
Directional Control Valve  
With Integral Relief Valve**

**Type BDR-X-Y**



**TECHNICAL DATA**

- Nominal flow rate - 25 l/min for X = 38
- Nominal flow rate - 50 l/min for X = 12
- Nominal pressure - 210 bar
- Relief valve variation ratio - 10...250 bar

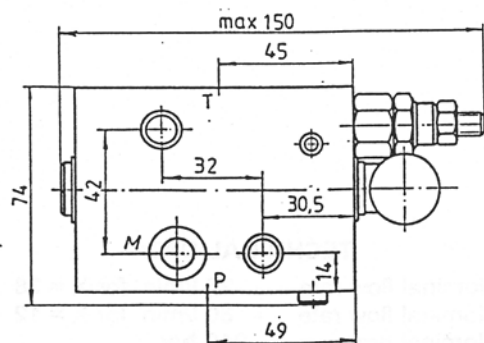
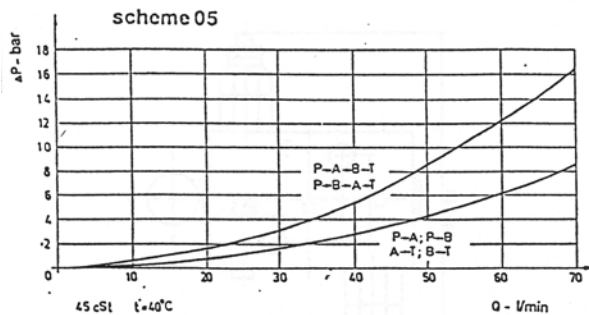
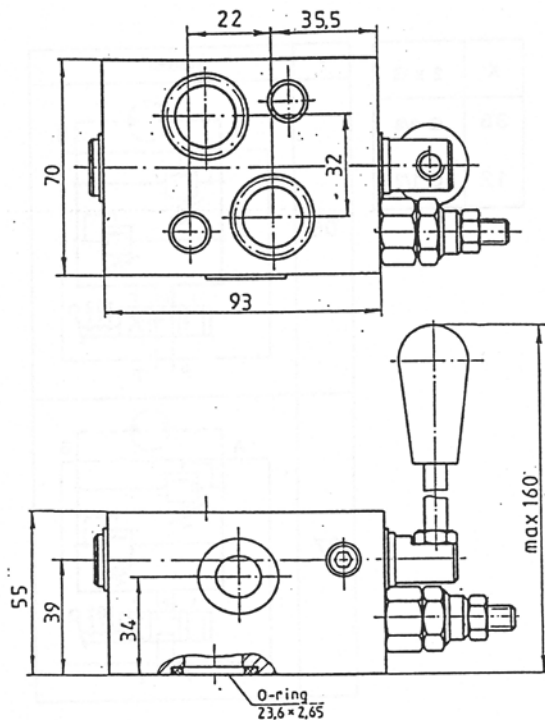
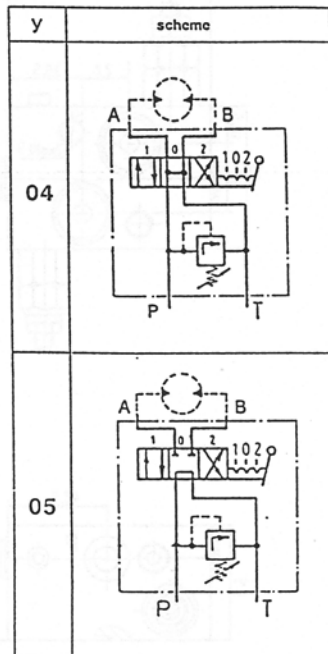
**Manifold Mounts Directly onto ports of EPM & EPRM (OMP & OMR) motor**



**BDS Type Motor Mounted  
Directional Control Valve  
With Integral Relief Valve**

**Type BDS-X-Y**

X	2 x G
38	G 3/8
12	G 1/2



**TECHNICAL DATA**

- Nominal flow rate - 25 l/min for X = 38
- Nominal flow rate - 50 l/min for X = 12
- Nominal pressure - 210 bar
- Relief valve variation ratio - 10...250 bar

*Manifold Mounts Directly onto ports of EPMS (OMS) motor*